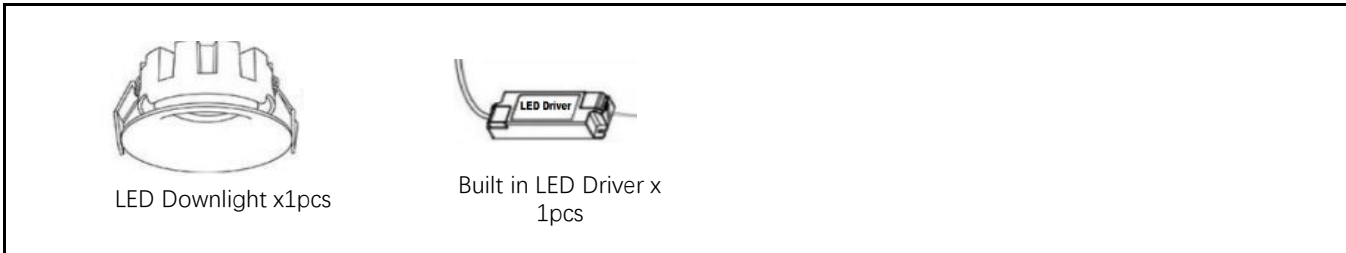
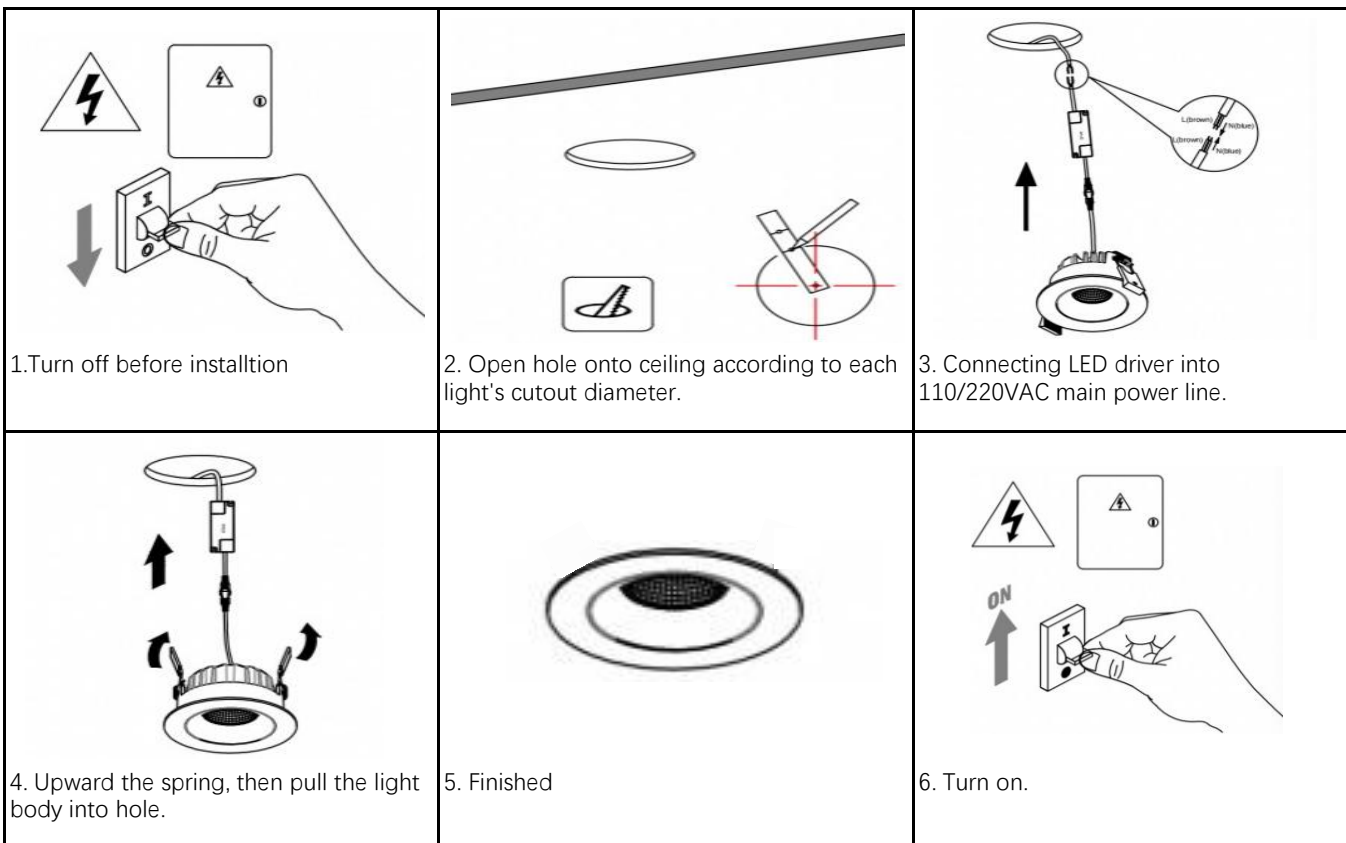


## Installation Manual

### 1. What is in inner box package



### 2. Installation Step



### 3. Warning

- The Lamp is only for Indoor and Dry application, keep away from Heat, Steam, Wet, Oil, Corrosion etc, which may affect its permanence and shorten the lifespan.
- Please strictly follow the instructions while installation to avoid any Hazard or damages.
- Any installation, or maintenance should be done by professional, do not DIY if without enough knowledge.
- Please double check before turn on if wiring is 100% OK, make sure Voltage for lamp is right and no Short-Circuit.
- Please do not block any objects on the lamp, which will definitely affect heat emission while lamp's working.
- Please do not work with any dimmer, if the LED driver is not dimmable.