

GRNLED

Greenriy Technology Co.,Limited

BROCHURE

Greenriy Technology Co.,Limited/Shenzhen Gelvmei Technology Co.,Ltd with brand GRNLED, GOLUMEN, and EuroLight which is especially for Nigeria Market is a professional manufacturer, factory, supplier of Led lights. Established in 2014 at Shenzhen city in China, has grown from its humble origins into an lighting industry leader and the best manufacturer and supplier. By focusing on advanced led technologies and outstanding talent, GRNLED offers professionals and users the solutions and support their need for a wide variety of applications. Our production capacity up to 10000pcs/days for common standard lighting. We pursue the following company culture to create the greatest value for customers.

WHY US

- Certification: ISO9001:2015 listed. And all products are are CE Certified, RoHS Compliant.
- One-stop supply: Mostly all types led lights we can produce.
- Better price: Our led lamps are 10%-30% cheaper than other suppliers on the market.
- OEM ODM Service: Accept OEM ODM for different items.
- Faster delivery: Delivery time is fastest, some items is only 1-3days.
- Quality Control: Each lights will be 8-12hours age test before sent out.

WARRANTY

- The basic warranty periods for our led lights is 2-3years, and 5years .
- During guarantee periods, GRNLED provide following supports
- We can send FREELY new products or spares to you if there is any quality issues caused by us within guarantee periods,
- Out of warranty period, It is ok for us to provide extra spares, but all expense for repair and shipping cost should be on customers.

PARTNERS



Content



Page 1-3
Magnetic Track Lighting



Page 4-5
LED Track Lights



Page 6
LED Panel Light



Page 7
LED Linear Light



Page 8
LED Batten Light



Page 9-30
LED Downlight/Ceiling Lights



Page 31-32
Highbay LED Light



Page 34
LED Street Lights



Page 35-36
LED Floodlight



Page 37-41
Outdoor Landscape Lighting

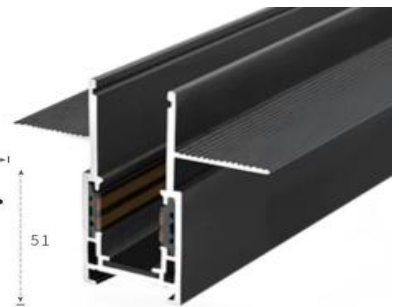
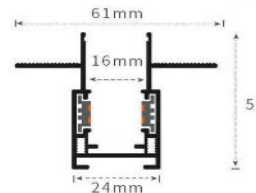


15mm Width Magnetic Linear Light

• DC48V 120°; Black/white finished;



Ref Number	Power	Size(mm)
GR-ML-10WML-15	10W	L300*W15
GR-ML-20WML-15	20W	L600*W15



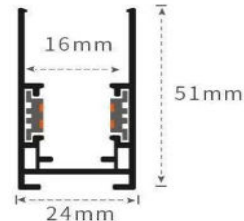
15mm width type Recessed Magnetic Rail

15mm Width Magnetic Grille Light

• DC48V 24°/36°; Black/white finished



Ref Number	Power	Size(mm)
GR-ML-6WGS-15	6W	L112*W15
GR-ML-12WGS-15	12W	L220*W15
GR-ML-18WGS-15	18W	L328*W15
GR-ML-24WGS-15	24W	L435*W15



15mm width type Surface Magnetic Rail

15mm Width Magnetic Fold Light

• 24°/36°; Black/white finished; adjustable direction.



Ref Number	Power	Size(mm)
GR-ML-6WFS-15	6W	L118*W15
GR-ML-12WFS-15	12W	L230*W15
GR-ML-18WFS-15	18W	L338*W15

15mm Width Magnetic Spot Light

• 15°/24°/36°; Black/white finished;



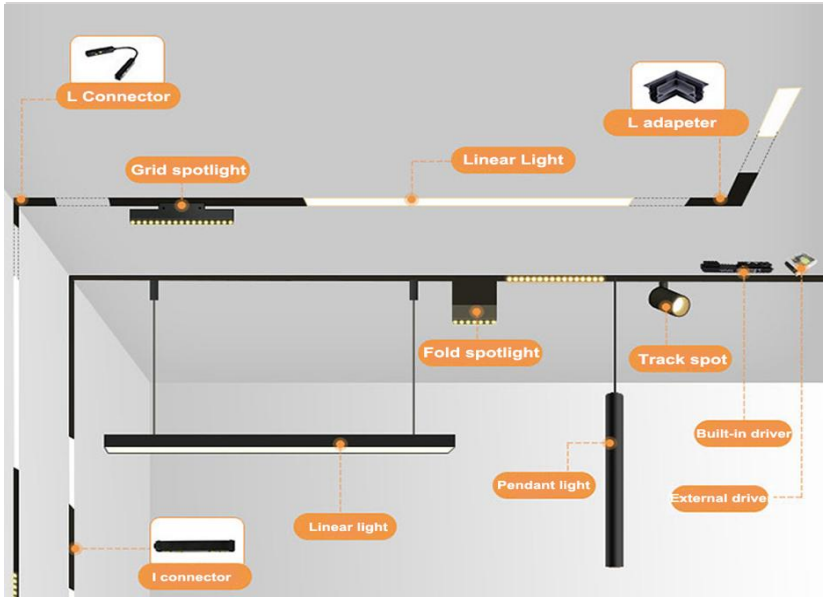
Ref Number	Power	Size(mm)
GR-ML-10WTL-15	10W	D50*100
GR-ML-15WTL-15	15W	D55*130
GR-ML-20WTL-15	20W	D60*135

15mm Width Magnetic Pendant Light

• DC48V 24°/36°; Black/white finished



Ref Number	Power	Size(mm)
GR-ML-5WPL	5W	Φ30*300mm
GR-ML-7WPL	7W	Φ40*300mm



Feature

- DC48V Input ,safety. CE RoHS certificates
- Compatible with 20mm width track rail, black/white option
- Die-cast aluminum body, good heat performance
- CRI80/90; Osram/Bridgelux SMD chips, 100-120lm/W.
- 50000Hrs lifetime, 2/3/5 Years warranty

Options

- 0-10V/DALI dimmable option
- 3CCT color change by a dial switch.
- Zigbee or remote controller type.
- White body finished.



■ Magnetic Linear Light

• DC48V 120°; Black/white finished;

Ref Number	Power	Size(mm)
GR-ML-10WML	10W	L300*W22
GR-ML-20WML	20W	L600*W22
GR-ML-30WML	30W	L900*W22

■ Magnetic Grille Light

• DC48V 24°/36°; Black/white finished

Ref Number	Power	Size(mm)
GR-ML-6WGS	6W	L112*W22
GR-ML-12WGS	12W	L220*W22
GR-ML-18WGS	18W	L328*W22
GR-ML-24WGS	24W	L435*W22
GR-ML-30WGS	30W	L543*W22

■ Magnetic Fold Light

• 24°/36°; Black/white finished; adjustable direction.

Ref Number	Power	Size(mm)
GR-ML-6WFS	6W	L118*W22
GR-ML-12WFS	12W	L230*W22
GR-ML-18WFS	18W	L338*W22
GR-ML-24WFS	24W	L430*W22

■ Magnetic Spot Light

• 15/24/36°; Black/white finished;

Ref Number	Power	Size(mm)
GR-ML-10WTL	10W	D50*100
GR-ML-15WTL	15W	D55*130
GR-ML-20WTL	20W	D60*135
GR-ML-25WTL	25W	D70*140

■ Magnetic L profile Light

GR-ML-20WZL



■ Magnetic Pendant Light

• DC48V 24°/36°; Black/white finished

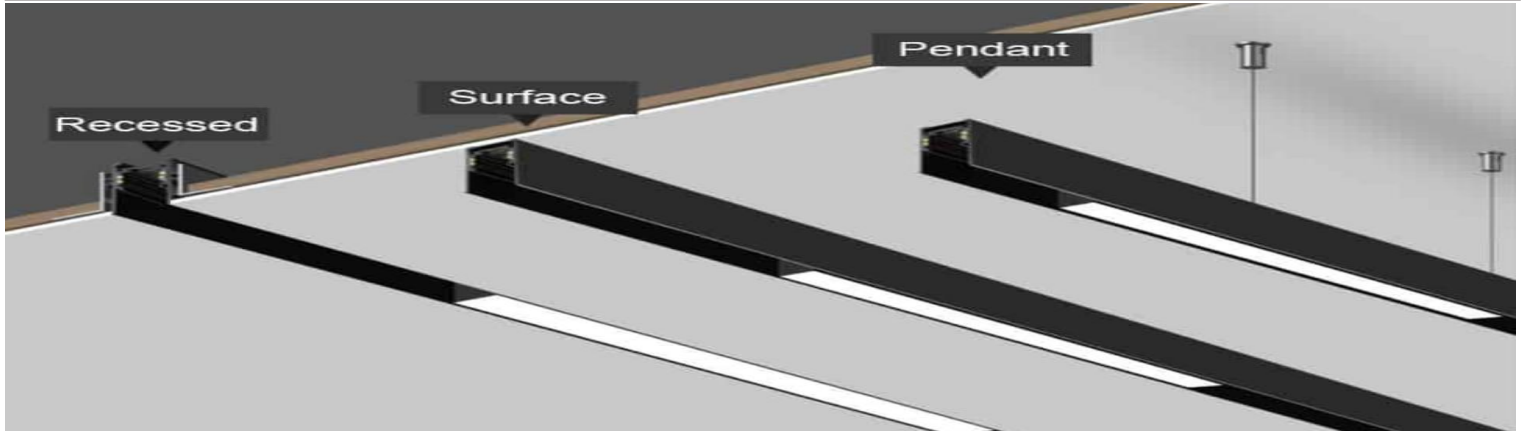
Ref Number	Power	Size(mm)
GR-ML-5WPL	5W	Φ30*300mm
GR-ML-7WPL	7W	Φ40*300mm
GR-ML-10WPL	10W	Φ50*160mm



■ Magnetic Ball Light

GR-ML-10WBL





- Color body: Black/ White
- Conductor: 4 wires pure copper conductor
- Compatible for all magnetic light / 1000mm/2000mm/3000mm length available



■ Recessed Magnetic Rail

Model: GR-B27 (2.0mm thickness)



■ Trimless Magnetic Rail

Model: GR-A05 (2.0mm thickness)



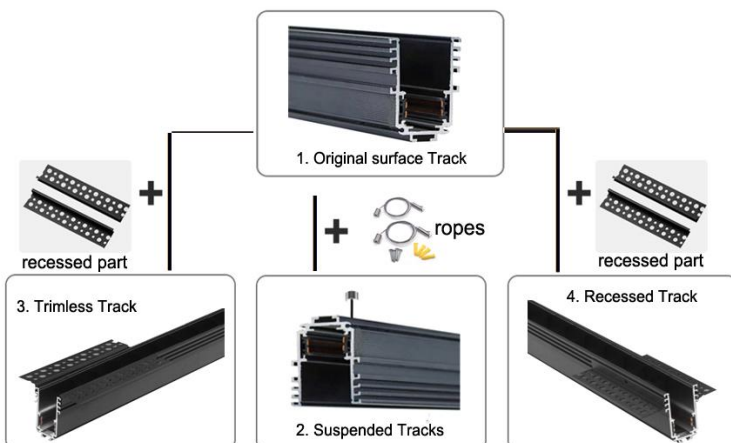
■ Surface/Pendant Magnetic Rail

Model: GR-S201 (1.5mm thickness)

4 in 1 Magnetic track

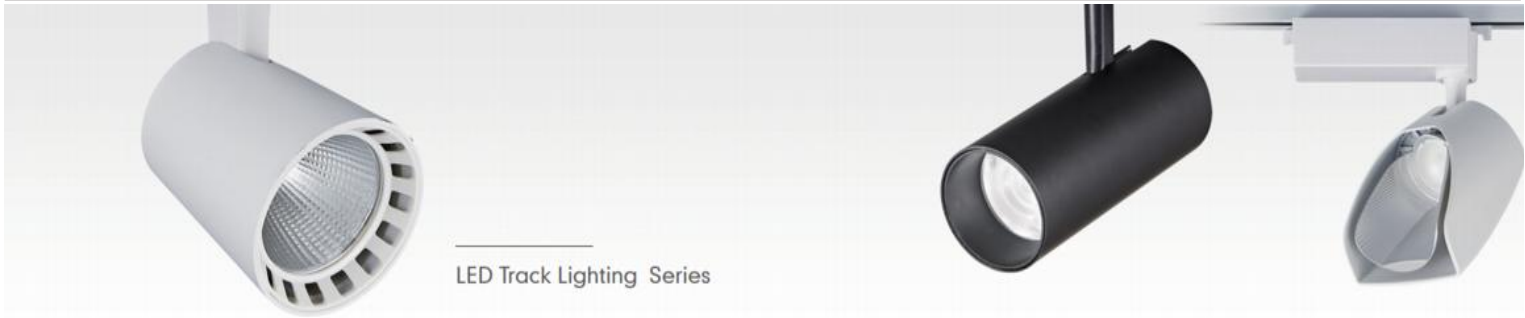
One track can be compatible with surface, recessed, trimless, pendant installation

Model: GR-A01



	GR-ML-L-01 L connector
	GR-ML-I-01 I connector
	T connector
	GR-ML-S Input cable
	GR-ML-Rope Suspension ropes

	L corner Horizontal and vertical options Recessed/Trimless/Surface options
	T corner Recessed/Trimless/Surface options
	Integrated driver AC110/220V input to 48VDC 100W/200W
	External driver AC110/220V input to 48VDC 100W 150W/200W/350W



LED Track Lighting Series

Feature

- Driver: 110/220-240VAC 50/60Hz, isolated driver 2/3/5years warranty . CCT Tunable & Watts selectable options.
- Osram COB/Bridgelux COB, CRI>90, SDCM<3, 100-120LM/W
- 2Wires(single phase) as standard, 3 wires or 4 wires(3phases) options
- PF>0.5 as standard, >0.9 options.



Hot Sale LED Track Light (2 Wires & 1 Circuit)

- 15/24/36°; 2wires as standard, white/Black body options. CRI90,100-240VAC.
- Options: 3CCT by a dial switch / Collapsible Extension Arm / Barn Door / Honeycomb



Ref Number	GR-TL-10WA	GR-TL-15WA	GR-TL-20WA	GR-TL-30WA	GR-TL-35WA	GR-TL-40WA
Power	10W	15W±5%	20W±5%	30W±5%	35W±5%	40W±5%
Dimension	Φ50x100	Φ60x135	Φ60x135	Φ80x150	Φ80x170	Φ90x160



Integrated Driver LED Track Light (High End 3 Phases)

- Shorter body, latest popular high end / 110/220-240VAC 50/60Hz/ CRI92 / 15°/24°36°60° options
- Track head built in track rail, very stylish for high end shops.1/3phases options.

Ref Number	GR-TL-20WF	GR-TL-25WF	GR-TL-30WF	GR-TL-35WF	GR-TL-40WF
Power	20W±5%	25W±5%	30W±5%	35W±5%	40W±5%
Size(mm)	Φ90x90	Φ90x90	Φ100x100	Φ100x100	Φ100x106



Commercial LED Track Light (Competitive price for 3 Phases)

- Competitive price for 4 wires (3phases) type .110/220-240VAC 50/60Hz.
- Beam angle 24/36° . LiFud/Eaglerise driver, super stable, CRI>92, PF>0.9. 0-10V/DALI dimmable options

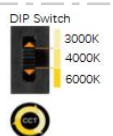
Ref Number	GR-TL-25WB	GR-TL-30WB	GR-TL-35WB
Power	25W±5%	30W±5%	35W±5%
Dimension	Φ100x150	Φ100x150	Φ100x150



Adjustable Beam angle Track Light

- Beam angle can be changed from 15° to 60° / 110/220-240VAC 50/60Hz / CRI:>90
- Options: 3CCT by a dial switch / Triacd, 0-10V, DALI dimmable options

Ref Number	GR-TL-10WD	GR-TL-15WD	GR-TL-20WD	GR-TL-25WD	GR-TL-30WD
Power	10W±5%	15W±5%	20W±5%	25W±5%	30W±5%
Size(mm)	Φ55x135	Φ65x165	Φ75x170	Φ75x170	Φ80x200mm





Zoomable & Shapable Track Light

- Available to change the shape of lighting./ 110V or 220-240VAC 50/60Hz / CRI:>90
- Track installation/Surface installation options, 1/3circuit options.

Ref Number	GR-TL-7WT	GR-TL-10WT	GR-TL-15WT	GR-TL-20WT	GR-TL-30WT
Power	7W±5%	10W±5%	15W±5%	20W±5%	30W±5%
Size(mm)	Φ55*190	Φ55*190	Φ55*190	Φ55*210	Φ55*270

Commercial Track Light

- Shorter body, latest popular high end. 110/220-240VAC 50/60Hz.15/24/36° beam angle.
- Track head built in track rail, very stylish for high end shops.1/3phases options.

Ref Number	GR-TL-10WF-6	GR-TL-15WF-6	GR-TL-20WF-6	GR-TL-30WF-6
Power	10W±5%	12W- 15W±5%	20W±5%	30W±5%
Size(mm)	Φ55xL50mm	Φ65xL60mm	Φ85xL50mm	Φ105xL50mm



Linear LED Track Light (Isolated driver type & high quality)

- Including linear profile and grille spotlight types./ 110 or 220V-240VAC 50/60Hz / CRI>90.
- Isolated driver type, only do high quality solution for commercial projects. Only 2wires type available

Ref Number	GR-TL-10WL	GR-TL-18WL	GR-TL-28WL	GR-TL-35WL
Power	10W±5%	18W±5%	28W±5%	35W±5%
Dimenson	L214mm	L346mm	L478mm	L611mm



Round LED Track Light (GR-TL-B-3)

- 2 Wires / IP20 / 120° / 110 or 220V-240VAC 50/60Hz / CRI>80.
- Options: Black or white body finished

Ref Number	GR-TL-7WB-3	GR-TL-12WB-3	GR-TL-18WB-3	GR-TL-24WB-3
Power	7W±5%	12W±5%	18W±5%	24W±5%
Dimenson (mm)	Φ75* H30	Φ95* H30	Φ115* H30	Φ140* H30



Ref Number	Power	Remark
GR-TL-30WR	30W	1/3 phases



Ref Number	Power	Remark
GR-TL-30WH	30W-35W	1/3 phases



Ref Number	Power	Remark
GR-TL-30WS	30W-35W	1/3 phases

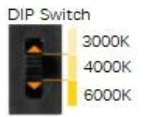


Feature

- Philips/LiFud/Eagleries driver brand as standard. 2/3/5Years warranty
- Philips /Bridgelux SMD Chips, CRI>80 or 90, SDCM<3, 100-140LM/W

Back-Lit Panel Light

- Stronger Metal bottom , thickness >0.25mm, or 0.3mm. IP44.
- The chassis adopts spray painting technology, which is resistant to high temperature and yellowing



Ref Number	GR-PL3030-18WD	GR-PL6030-24WD	GR-PL6060-40WD	GR-PL12030-40WD	GR-PL12060-80WD
Wattage	18W-24W	24W-30W	36/40W/48W/60W	40W/50W	50W/60W/72W/80W
Size(mm)	295*295*30	595*295*30	595*595*23	1195*295*30	1195*595*30

Waterproof Backlit LED Panel Light

- Metal bottom thickness: 0.6mm, strongest process by manually.
- Flat Aluminum frame, highest commercial level. IP65 waterproof



Ref Number	GR-PL3030-18WB	GR-PL6030-24WB	GR-PL6060-40WB	GR-PL12030-40WB	GR-PL12060-72WB
Wattage	18W	20W	40W	40W	72W
Size(mm)	295*295*31	595*295*31	595*595*31	1195*295*31	1195*595*31

Surface LED Panel Light

- IP44 as standard, / IP65 waterproof is options
- Integrated surface frame, brigelux/philips chips. 100lm/w. CRI80/90. 110/220-240VAC.



Ref Number	GR-PL6030-24WF	GR-PL6060-40WF	GR-PL12030-40WF	GR-PL12060-72WF
Wattage	20W	40W	40W	72W
Size(mm)	600*300*39	600*600*39	1200*300*39	1200*600*39

Edgelit Slim Surface Panel Light for Cleanroom

- Slim edgelit type / IP20 IP65 options / 110 Or 220-240VAC 50/60Hz / 100-120lm/W output
- Options: Triac/0-10V/DALI dimmable;



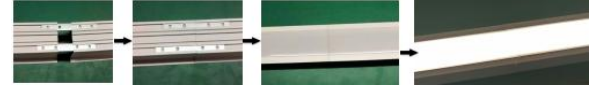
Ref Number	GR-PL3030-18WA	GR-PL6030-24WA	GR-PL6060-40WA	GR-PL12030-40WA	GR-PL12060-72WA
Wattage	18W	20W	40W	40W	72W
Size(mm)	300x300xH12mm	600*300*H12mm	600*600*H12mm	1200*300*H12mm	1200*600*H12mm

IP20 & IP65 option



Continuous Pendant Linear Light

- Beam angle: 120°, white/black finished optional.
- Seamlessly connection one by one.



Ref Number	GR-L5070-60	GR-LS-5070-120	GR-LS5070-150	GR-LS5070-240
Wattages	18W	36W	42-44W	72W-80W
Dimension	L585*W50*H70	L1185*W50*H70	L1485*W50*H70	L2390*W50*H70



Continuous Recessed Linear Light

- Beam angle: 120°, white/black finished optional
- Source: Osram/Bridgelux SMD CRI80 100-129lm/w

Ref Number	GR-LS-5035-120	GR-LS-5035-150	GR-LS-5035-240	GR-LS-6535-120	GR-LS-6535-150
Wattages	36W	44W	72W	36W	44W
Cutout (mm)	L1180*W42	L1478*W42	L2378*W42	L1178*W52	L1478*W52



Combination Pendant Linear Light

- Beam angle: 120°+ 24°, white/black finished optional
- Source: Osram/Bridgelux SMD CRI80 100-129lm/w. 110/220-240VAC 50/60Hz.

Ref Number	GR-LS6636-36W	GR-LS6636-36W
Wattage	36W	36W
Dimension	L1065*W33*H66	L1200*W33*H66



Round Pendant Linear Light

- Beam angle: 320°, aluminum+PC cover
- Source: Bridgelux SMD CRI80 100-129lm/w. 110/220-240VAC 50/60Hz

Ref Number	GR-LS60-120	GR-LS60-150
Wattages	36W	45W
Dimension	Ø60*L1200	Ø60*L1500

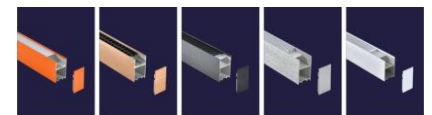


Plastic Pendant Linear Light

- Plastic body/ UGR<19 anti glare / Beam angle: 120°/ Prism / Grille / Honeycomb Options optional.
- Options: Orange/Apple Gold/Brushed Silver/Wood Grain/Black/White body options.



Ref Number	GR-LS-120A	GR-LS-120B
Wattages	36W	36W
Dimension	L1200*W35*H70	L1200*W50*H80





Top Weatherproof LED batten

- PC Bottom+PC Cover + Stainless steel clips / IP65 / 130lm/W output / PF0.9 / 110 or 220-240VAC 50/60Hz
- Options: Suspension installation / Radar Sensor / Emergency backup / Dimmable / Linkable.



Ref Number	GR-TP-2F2A	GR-TP-4F1A	GR-TP-4F2A	GR-TP-5F1A	GR-TP-5F2A	GR-TP-6F2A
Wattage	18W-20W	20W	40W-50W	30W	50W-60W	60W
Size(mm)	L600*W82*H72	L600*W82*H72	L1200*W82*H72	L1200*W82*H72	L1500*W82*H72	L1500*W82*H72

Weatherproof LED batten with T8 LED Tube

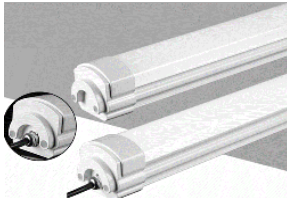
- Beam angle: 120°; ABS Bottom+PC cover. constant current driver for T8 LED Tube with aluminum body.



Ref Number	GR-TP-2F1B	GR-TP-2F2B	GR-TP-4F1B	GR-TP-4F2B	GR-TP-5F1B	GR-TP-5F2B
Wattage	1* 9W led T8	2* 9W led T8	1* 18W led T8	2* 18W led T8	1* 22W led T8	2* 22W led T8
Size(mm)	L665*W75*H86	L665*W113*H86	L1265*W75*H86	L1265*W113*H86	L1565*W75*H86	L1565*W113*H86

Whole Plastic Body LED batten (GR-TP-U)

- Beam angle: 120° / IP65 / PF>0.9 / 110,220-240VAC 50/60Hz



Ref Number	GR-TP-2F2U	GR-TP-4F2U	GR-TP-5F2U
Wattage	18W	36W	44W
Size(mm)	L600*W65*H60	L1200*W65*H60	L1500*W65*H60

Linkable T5 / T8 LED batten

- Linkable design / IP20 / PF>0.9 / 110,220-240VAC 50/60Hz



Ref Number	GR-T5-2F	GR-T5-3F	GR-T5-4F	GR-T8-2F	GR-T8-3F	GR-T8-4F
Wattage	9W	13W	18W	9W or 18W	13W or 26W	18W or 36W
Size(mm)	600mm	900mm	1200mm	600mm	900mm	1200mm

IP44 Dustproof LED Batten (GR-TP-L)

- Beam angle: 120° / IP44 / PF>0.9 / 110,220-240VAC 50/60Hz / Aluminum body



Ref Number	GR-TP-2F2L	GR-TP-4F2L	GR-TP-5F2L
Wattage	18W	36W	44W
Size(mm)	L600*W75	L1200*W75	L1500*W76



Hot sale Anti Glare Downlight (GR-DL-A)

- Beam angle 90°; IP44-54 for front. commercial level at good price.
- Deep reflector low glare value UGR<15; Gold/Shining silver/White/Black reflector options.White/black body options.

Ref Number	GR-DL-7WA	GR-DL-9WA	GR-DL-12WA	GR-DL-15WA	GR-DL-18WA	GR-DL-24WA	GR-DL-30WA
Size(mm)	Ø79*36	Ø93*H45	Ø112*H52	Ø135*H60	Ø162*H72	Ø192*H83	Ø225*H97
Outcut(mm)	Ø65-70	Ø75-80	Ø95-100	Ø115-120	Ø140-145	Ø170-175	Ø195-205



Top Newest Downlight (GR-DL-B-9)

- Beam angle: 15°24°36°60° options. IP44; Bridgelux /Osram/CITIZEN COB, CRI>90
- Deep reflector low glare value UGR<15; Matt silver/Shining silver/White/Black reflector options



Ref Number	GR-DL-15WB-9	GR-DL-25WB-9	GR-DL-35WB-9	GR-DL-40WB-9	GR-DL-50WB-9
Size(mm)	Ø115*60	Ø136*H70	Ø162*H80	Ø195*H95	Ø220*H105
Outcut(mm)	Ø105	Ø125	Ø150-155	Ø175-180	Ø205



Commercial Downlight (GR-DL-B-5)

- Beam angle: 24°36°for COB; 60°with SMD Chips options. IP44; Bridgelux /Osram, CRI>90
- Deep reflector low glare value UGR<15; White/Black reflector options. Commercial level at good price.

Ref Number	GR-DL-7WB-5	GR-DL-10WB-5	GR-DL-15WB-5	GR-DL-20WB-5	GR-DL-25WB-5
Size(mm)	Ø62*H45	Ø82*H54	Ø102*H62	Ø130*H70	Ø130*H70
Outcut(mm)	Ø55	Ø75	Ø90-95	Ø115-120	Ø115-120



High Power Commercial Downlight (GR-DL-S)

- Beam angle: 15°24°36°50° options. IP44; Bridgelux /Osram/CITIZEN COB, CRI>90
- Deep reflector low glare value UGR<15; God/Shining silver/White/Black reflector options. White/black body options.



Ref Number	GR-DL-30WS	GR-DL-35WS	GR-DL-40WS	GR-DL-50WS
Size(mm)	Ø160*85	Ø185*H95	Ø185*H95	Ø215*H110
Outcut(mm)	Ø145-150	Ø160-175	Ø160-175	Ø195-205



High lumens Anti glare Downlight (GR-DL-A-3)

- 110-120lm/W / Beam angle: 60° / IP44 for front / CRI>90 / UGR<17 / 110 or 220-240VAC 50/60Hz
- Options: White/black finished / Triac ,0-10v, DALI dimmable



Ref Number	GR-DL-12WA-3	GR-DL-15WA-3	GR-DL-20WA-3	GR-DL-24WA-3	GR-DL-30WA-3	GR-DL-40WA-3	GR-DL-50WA-3
Size(mm)	Ø90*60	Ø110*H76	Ø135*H80	Ø160*H86	Ø160*H86	Ø180*H92	Ø202*98
Outcut(mm)	Ø75-80	Ø95-100	Ø120-125	Ø145-150	Ø145-150	Ø165-170	Ø185-190



Competitive Commercial Deep Downlight -24/36/60° (GR-DL-A-6)

- CRI90 / IP44 for front / 110/220-240VAC 50/60Hz
- Options: Honeycomb / different reflector colors / Triac, 0-10V, DALI dimmable /24° 36° 60° option



Ref Number	GR-DL-12WA-6	GR-DL-15WA-6	GR-DL-20WA-6	GR-DL-24WA-6	GR-DL-30WA-6
Size(mm)	Ø85*H48	Ø105*H55	Ø135*H63	Ø135*H63	Ø160*H68
Outcut(mm)	Ø75	Ø95	Ø120-125	Ø120-125	Ø145-150



Deep Downlight (GR-DL-A-8)

- Beam angle:15/24/36° options.different color reflector options
- White/Black trim options.Super anti glare.Bridgelux/Osram COB chips.



Ref Number	GR-DL-7WA-8	GR-DL-10WA-8	GR-DL-15WA-8	GR-DL-18WA-8	GR-DL-25WA-8
Size(mm)	Ø65*H55	Ø85*H80	Ø101*H95	Ø101*H95	Ø118*H120
Outcut(mm)	Ø55	Ø75	Ø90-95	Ø90-95	Ø105-110



Competitive Deep Downlight (GR-DL-A-1)

- IP44, competitive in price and quality.
- Beam angle: 120° .Deep design with low glare value.110/220-240VAC 50/60Hz



Ref Number	GR-DL-7WA-1	GR-DL-12WA-1	GR-DL-15WA-1	GR-DL-18WA-1	GR-DL-24WA-1
Size(mm)	Ø95*H45	Ø115*H48	Ø138*H56	Ø170*H62	Ø170*H62
Outcut(mm)	Ø75-80	Ø95-100	Ø120-125	Ø150-155	Ø150-155



Super Anti glare spotlight (GR-DL-G-5)

- Beam angle:24/36° ,IP44, Bridgelux/Osram COB.CRI90. 90lm/W.
- Black/White/Gold bodyoptions, and white /black reflector options.110/220-240VAC 50/60Hz

Ref Number	GR-DL-7WG-5	GR-DL-10WG-5	GR-DL-12WG-5	GR-DL-18WG-5	GR-DL-20WG-5
Wattages	7W	10W	12W	15W-18W	20W-24W
Size(mm)	Ø62*H75	Ø72*H78	Ø82*H87	Ø95*H87	Ø105*H100
Outcut(mm)	Ø55	Ø65	Ø75	Ø85	Ø95



Hot sale & Competitive downlight (GR-DL-E)

- IP20 (IP54 front), competitive in price and quality.
- Beam angle: 120°. Classic design for projects. 110/220-240VAC 50/60Hz



Ref Number	GR-DL-7WE	GR-DL-9WE	GR-DL-12WE	GR-DL-15WE	GR-DL-18WE	GR-DL-24WE
Size(mm)	Ø108*H45	Ø118*H48	Ø138*H50	Ø180*H55	Ø180*H55	Ø195*H55
Outcut(mm)	Ø80-90	90-95	Ø115-120	Ø150-169	Ø150-160	Ø160-175

Commercial downlight (GR-DL-A-2)

- IP44 for front / Die-cast aluminum body / 120°/ CRI>80 / 110V or 220V-240VAC 50/60Hz.
- Options: Black finished / Triac , 0-10V dimmable, DALI dimmable / Emergency backup options.



Ref Number	GR-DL-7WA-2	GR-DL-10WA-2	GR-DL-12WA-2	GR-DL-15WA-2	GR-DL-20WA-2	GR-DL30WA-2
Size(mm)	Ø108*H36	Ø118*H37	Ø138*H40	Ø178*H44	Ø190*H45	Ø242*H56
Outcut(mm)	Ø80-95	Ø90-100	Ø115-125	Ø155-160	Ø165-175	Ø210-230

Top Commercial downlight (GR-DL-B-4)

- 120° Beam angle / Die cast aluminum body+ PC Cover / CRI>80 / IP44 for front / 110V or 220-240VAC 50/60Hz
- Options: Matt white, black body options / Triac, 0-10V, DALI dimmable options / Emergency backup



Ref Number	GR-DL-10WB-4	GR-DL-12WB-4	GR-DL-15WB-4	GR-DL-20WB-4	GR-DL-30WB-4	GR-DL-40WB-4
Size(mm)	Ø115*H48	Ø115*H48	Ø145*H60	Ø160*H60	Ø190*H60	Ø230*H72
Outcut(mm)	Ø95-100	Ø95-100	Ø125-130	Ø140-145	Ø165-175	Ø200-215

Competitive Recessed downlight (GR-DL-B-11)

- COB as standard, it is ok to do it with SMD Chips. 110/220-240VAC 50/60Hz
- Beam angle: 120°. IP20; Bridgelux /Osram/CITIZEN Chip, CRI>90



Ref Number	GR-DL-7WB-11	GR-DL-9WB-11	GR-DL-12WB-11	GR-DL-15WB-11	GR-DL20WB-11	GR-DL-25WB-11	GR-DL-35WB-11
Size(mm)	Ø75*H40	Ø100*H43	Ø120*H43	Ø150*H45	Ø175*H50	Ø197*H50	Ø230*H55
Outcut(mm)	Ø55-65	Ø75-90	Ø95-105	Ø125-140	Ø145-165	Ø165-180	Ø195-215

Slim Recessed LED Downlight MOQ:300/model (GR-DL-Y)

- Die cast aluminum body / 120° / CRI>80 / IP44 for front / 110V or 220V-240VAC 50/60Hz
- Options: Triac/0-10V/DALI dimmable options; emergency kit



Ref Number	GR-DL-7WY	GR-DL-10WY	GR-DL-12WY	GR-DL-15WY	GR-DL-20WY	GR-DL-30WY
Size(mm)	Ø100*H35	Ø120*H35	Ø145*H35	Ø165*H35	Ø180*H35	Ø230*H36
Outcut(mm)	Ø75-80	Ø95-100	Ø120-125	Ø135-145	Ø150-165	Ø190-210



■ Top COB downlight with Glass Cover (GR-DL-B-1)

- 60°/90° Beam angle / CRI>90 / IP44 for front / 110V or 220-240VAC 50/60Hz
- Options: Matt white, black body options / Triac, 0-10V, DALI dimmable options / Emergency backup



Ref Number	GR-DL-10WB-1	GR-DL-12WB-1	GR-DL-15WB-1	GR-DL-20WB-1	GR-DL-30WB-1	GR-DL-40WB-1
Size(mm)	Ø115*H48	Ø115*H48	Ø145*H60	Ø160*H60	Ø190*H60	Ø230*H72
Outcut(mm)	Ø95-100	Ø95-100	Ø125-130	Ø140-145	Ø165-175	Ø200-215

■ Top COB downlight with Glass Cover (GR-DL-B-8)

- 120° Beam angle / CRI>90 / IP44 for front / 110V or 220-240VAC 50/60Hz
- Options: Matt white, black body options / Triac, 0-10V, DALI dimmable options / Emergency backup



Ref Number	GR-DL-15WB-8	GR-DL-20WB-B	GR-DL-30WB-8	GR-DL-40WB-8	GR-DL-50WB-8
Size(mm)	Ø135*H70	Ø170*H80	Ø190*H110	Ø230*H10	Ø230*H10
Outcut(mm)	Ø120	Ø145-160	Ø170-175	Ø205-210	Ø205-210

■ Anti Glare COB downlight (GR-DL-A-5)

- Deep design, UGR< 19 anti glare / 36/ 60° Beam angle / CRI>90 / IP20 / 110V or 220-240VAC 50/60Hz
- Options: Matt white, black body options / Triac, 0-10V, DALI dimmable options / Emergency backup



Ref Number	GR-DL-10WA-5	GR-DL-15WA-5	GR-DL-20WA-5	GR-DL-25WA-5	GR-DL-30WA-5	GR-DL-35WA-5
Size(mm)	Ø110*H75	Ø130*H96	Ø158*H106	Ø182*H118	Ø182*H118	Ø230*H130
Outcut(mm)	Ø95	Ø105-120	Ø125-140	Ø150-170	Ø150-170	Ø190-215

■ 9inch / 10inch Commercial downlight with cutout 200-280mm

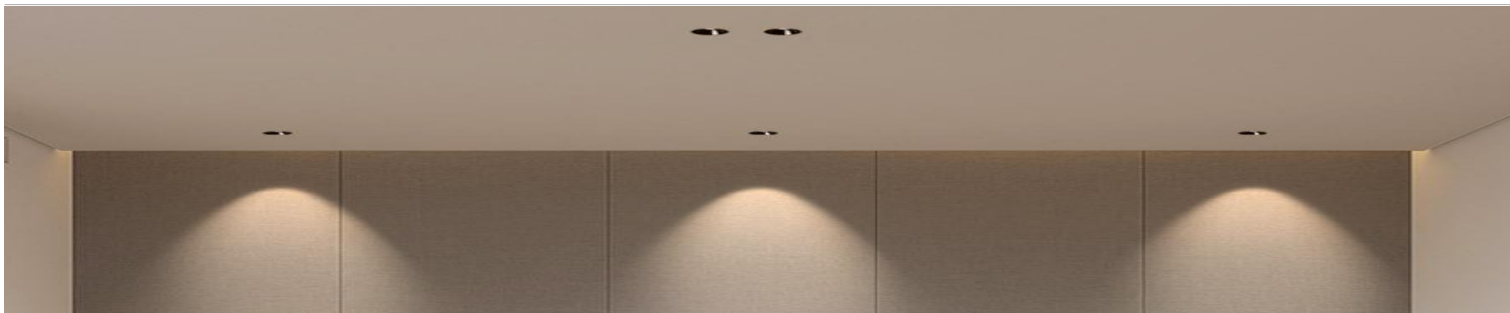
- 120° Beam angle / CRI>90 / IP44 for front / 110V or 220-240VAC 50/60Hz
- Options: COB or SMD type options / Dimmable / Emergency backup options



Ref Number	GR-DL-30WA-9in	GR-DL-30WA-10in	GR-DL-40WB-9in	GR-DL-40WB-10in
Size(mm)	Ø250*H62	Ø300*H100	Ø250*H75	Ø300*H110
Outcut(mm)	Ø200-240	Ø220-280	Ø200-240	Ø220-280

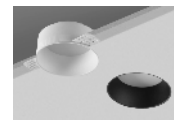


9inch



■ Fixed Large Distribution Trimless LED Downlight (GR-DL-F)

- Beam angle 120° / Deep design UGR<19 / 110/220-240VAC 50/60Hz / IP44 for front
- Option: Matt White/ black options; Triac dimmable /0-10V dimmable / DALI dimmable options.



Ref Number	GR-DL-9WF	GR-DL-12WF	GR-DL-18WF	GR-DL-24WF
Outcut(mm)	Ø75*H42mm	Ø95*H48mm	Ø125*H63mm	Ø145*H68mm

■ Frameless plaster Downlights (GR-DL-F- R or S)

- Plaster body / IP20 / Beam angle 24° or 36° / Deep design UGR<17 / 110/220-240VAC 50/60Hz
- Option: Round or Square Shape / Triac dimmable /0-10V dimmable / DALI dimmable options.



Ref Number	GR-DL-7WF-R	GR-DL-15WF-R	GR-DL-7WF-R	GR-DL-15WF-R
Outcut(mm)	Ø105mm	Ø105mm	LW105mm	LW105mm
Remark	Round	Round	Square	Square

■ Competitive Adjustable Trimless LED Spotlight (GR-DL-G-11)

- Adjustable 25° / Deep design UGR<17 / 110/220-240VAC 50/60Hz / IP20 / CRI>90 / 15/24/36/55° beam angle.
- Option: Triac dimmable /0-10V dimmable / DALI dimmable options/ White,black,shining silver, gold reflector option



Ref Number	GR-DL-7WG-11	GR-DL-10WG-11	GR-DL-15WG-11	GR-DL-18WG-11
Outcut(mm)	Ø55mm	Ø75mm	Ø95mm	Ø95mm

■ Top Adjustable Trimless LED Spotlight (GR-DL-G-1)

- Adjustable 25° / Deep design UGR<17 / 110/220-240VAC 50/60Hz / IP20 / CRI>90 / 15/24/36/55° beam angle.
- Option: Triac dimmable /0-10V dimmable / DALI dimmable options/ White,black,shining silver, gold reflector option



Ref Number	GR-DL-7WG-1	GR-DL-10WG-1	GR-DL-12WG-1	GR-DL-15WG-1	GR-DL-20WG-1
Outcut(mm)	Ø55mm	Ø75mm	Ø75mm	Ø95mm	Ø95mm

■ Waterproof Adjustable Trimless LED Spotlight (GR-DL-G-2)

- Adjustable 25° / Deep design UGR<17 / 110/220-240VAC 50/60Hz / IP20 / CRI>90 / 15/24/36/55° beam angle.
- Option: Triac dimmable /0-10V dimmable / DALI dimmable options/ White,black,shining silver, gold reflector option



Ref Number	GR-DL-7WG-2	GR-DL-10WG-2	GR-DL-12WG-2	GR-DL-15WG-2	GR-DL-20WG-2
Outcut(mm)	Ø55mm	Ø75mm	Ø75mm	Ø95mm	Ø95mm



■ Square Adjustable Trimless LED Spotlight (GR-DL-V-1)

- Adjustable 25° / Deep design UGR<17 / 110 or 220-240VAC 50-60Hz / IP44 / CRI>90 / 15/24/36/55° beam angle.
- Option: Triac dimmable /0-10V dimmable / DALI dimmable options/ White,black,shining silver, gold reflector option



Ref Number	GR-DL-7W V-1	GR-DL-10W V-1	GR-DL-15W V-1	GR-DL-20W V-1
Output(mm)	L57*W52mm	L75*W72mm	L95 *W92mm	L95 *W92mm

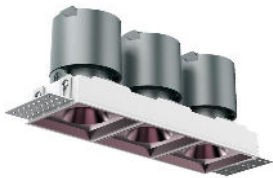


■ Double Adjustable Trimless LED Spotlight

- Adjustable 25° / Deep design UGR<17 / 110 or 220-240VAC 50-60Hz / IP44 / CRI>90 / 15/24/36/55° beam angle.
- Option: Triac dimmable /0-10V dimmable / DALI dimmable options/ White,black,shining silver, gold reflector option



Ref Number	GR-DL-2*7WV-1	GR-DL-2*10WV-1	GR-DL-2*15WV-1	GR-DL-2*20WV-1
Output(mm)	L110*W52mm	L146*W72mm	L186 *W92mm	L186 *W92mm



■ Triple Adjustable Trimless LED Spotlight

- Adjustable 25° / Deep design UGR<17 / 110 or 220-240VAC 50-60Hz / IP44 / CRI>90 / 15/24/36/55° beam angle.
- Option: Triac dimmable /0-10V dimmable / DALI dimmable options/ White,black,shining silver, gold reflector option



Ref Number	GR-DL-3*7W V-1	GR-DL-3*10WV-1	GR-DL-3*15W V-1	GR-DL-3*20W V-1
Output(mm)	L160*W52mm	L216*W72mm	L276 *W92mm	L276 *W92mm



■ Zoomable LED Spotlight (GR-DL-G-10)

- Zoomable, beam angle adjust from 15° to 45° to 60° / Adjustable 25° / 110 or 220-240VAC 50-60Hz / IP20 / CRI>90.
- Option: Matt white, black body options / Triac, 0-10V , DALI dimmable options/ emergency backup.



Ref Number	GR-DL-10WG-10	GR-DL-15WG-10	GR-DL-20WG-10	GR-DL-30WG-10	GR-DL-35WG-10
Size(mm)	Ø93*H90	Ø115*H95	Ø115*H112	Ø143*H115	Ø143*H115
Output(mm)	Ø75-80	Ø95-100	Ø95-100	Ø125	Ø125

■ Tilt Wall Washer Fixed LED Spotlight (GR-DL-GU)

- Tilt desgin for wall washer / 15/24/36°beam angle / Deep design UGR<17 / 110 or 220-240VAC 50-60Hz / IP20 / CRI>90.
- Option: Matt white, black body options / Triac, 0-10V , DALI dimmable options/ emergency backup.



Ref Number	GR-DL-10WG-10	GR-DL-15WG-10	GR-DL-20WG-10	GR-DL-30WG-10	GR-DL-35WG-10
Size(mm)	Ø93*H90	Ø115*H95	Ø115*H112	Ø143*H115	Ø143*H115
Output(mm)	Ø75-80	Ø95-100	Ø95-100	Ø125	Ø125



GR-DL-1WML (Fixed)-15/25/45°

220-240VAC Ø22*H26 Ø18mm



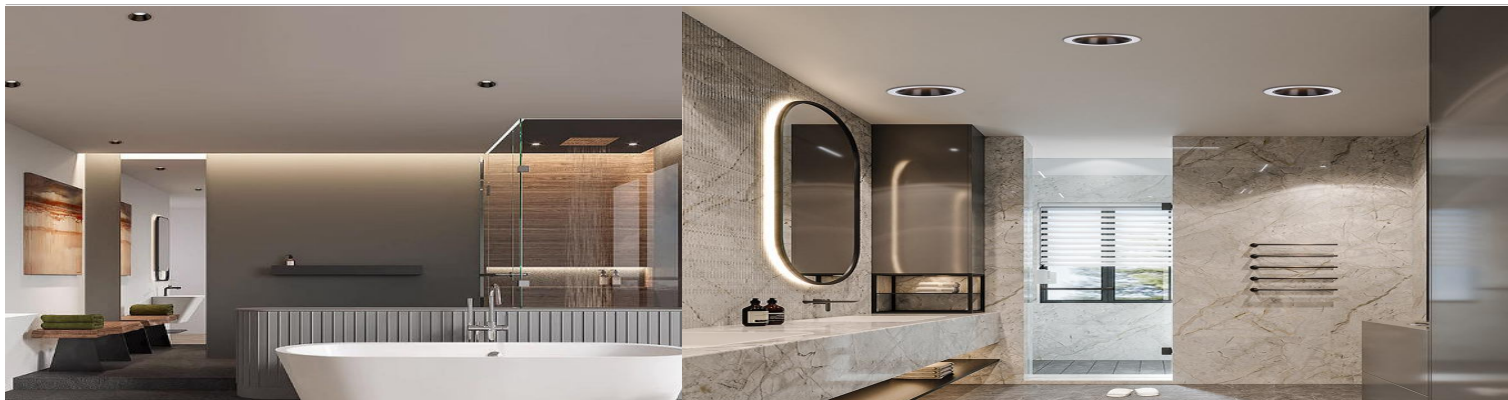
GR-DL-3WMA(Fixed)-25°

220-240VAC Ø38*H28 Ø30mm



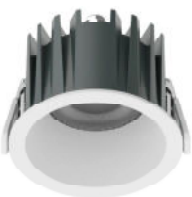
3W/GR-DL-3WME-Adjustable

220-240VAC Ø45*H50 Ø40mm



■ Top Commercial IP65 High Lumens Downlight (GR-DL-B-2)

- High lumen 120lm/W / 55° / IP65 / UGR:<17 / CRI90 / SDCM< 5 / 110 or 220-240VAC 50/60Hz.
- Option: White or black trim options; white,black, silver reflector options, Triac/0-10V /DALI dimmable options



Ref Number	GR-DL-15WB-2	GR-DL-20WB-2	GR-DL-25WB-2	GR-DL-30WB-2	GR-DL-40WB-2
Size(mm)	Ø83*H65	Ø103*H70	Ø132*H75	Ø160*H80	Ø180*H85
Outcut(mm)	Ø75	Ø95	Ø125	Ø150	Ø170



■ Square Waterproof Downlight (GR-DL-W-7)

- High lumen 120lm/W / 55° / IP65 / UGR:<17 / CRI90 / SDCM< 5 / 110 or 220-240VAC 50/60Hz.
- Option: White or black trim options; white,black, silver reflector options, Triac/0-10V /DALI dimmable options



Ref Number	GR-DL-12WW-7	GR-DL-15WW-7	GR-DL-20WW-7	GR-DL-30WW-7	GR-DL-40WW-7
Size(mm)	LW90*H60	LW110*H70	LW145*H75	LW165*H85	LW185*H92
Outcut(mm)	LW75	LW95	LW125	LW145	LW170



■ Adjustable Waterproof Spotlight (GR-DL-W-2)

- Beam angle:15/24/36/50° .IP65 waterproof, trim and trimless option.110/220-240VAC 50/60Hz
- Black/White/Shining silver/Gold/ gun black/ rose gold reflector options



Ref Number	GR-DL-7WW-2	GR-DL-10WW-2	GR-DL-15WW-2	GR-DL-20WW-2
Size(mm)	Ø63*H69	Ø85*H74	Ø110*H83	Ø110*H83
Outcut(mm)	Ø55	Ø75	Ø95	Ø95



■ IP65 Waterproof Deep Downlight (GR-DL-W-1)

- Beam angle:55°.Deep white/black reflectors options,UGR<15.
- IP65 waterproof for wet area like toilets, washroom, balcony etc.110/220-240VAC 50/60Hz



Ref Number	GR-DL-10WW-1	GR-DL-15WW-1	GR-DL-20WW-1	GR-DL-24WW-1
Size(mm)	Ø87*H72	Ø110*H82	Ø138*H100	Ø138*H100
Outcut(mm)	Ø75	Ø95	Ø120	Ø120





■ IP65 Waterproof downlight (COB/SMD)-(GR-DL-W)

- Beam angle:120° . SMD and COB options.110/220-240VAC 50/60Hz
- IP65 waterproof for wet area like toilets, washroom, balcony etc.



Ref Number	GR-DL-7WW	GR-DL-12WW	GR-DL-15WW	GR-DL-20WW	GR-DL-30WW	GR-DL-40WW
Size(mm)	Ø95*H45	Ø115*H50	Ø145*H60	Ø160*H60	Ø190*H60	Ø230*H75
Outcut(mm)	Ø75	Ø95	Ø125	Ø145	Ø170	Ø205



■ IP44 OR IP65 Deep Downlight (GR-DL-B-6)

- Beam angle:15/24/36°/55° options. UGR<13.Bridgelux/Osram COB chips.SDCM<3
- including IP44 and IP65 .LiFud/Eaglerise/Philips driver 220-240VAC



Ref Number	GR-DL-7WB-6	GR-DL-12WB-6	GR-DL-15WB-6	IP44 or IP65 options
Size(mm)	Ø60*H55	Ø82*H75	Ø105*H95	
Outcut(mm)	Ø55	Ø75	Ø95	



■ IP65 Deep Fixed Downlight (GR-DL-W-7)

- Beam angle 55° / UGR<15 / IP65 / CRI90 / SDCM<5 / 110 or 220V-240VAC 50/60Hz
- Options: White/Black trim, white/black/shining silver/gold reflector options. Dimmable.



Ref Number	GR-DL-7WW-7	GR-DL-10WW-7	GR-DL-15WW-7
Size(mm)	Ø61*H47	Ø83*H52	Ø103*H57
Outcut(mm)	Ø55	Ø75	Ø95



■ IP65 Grille Downlights (GR-DLG-W)

- Beam angle 36° or 55° / UGR<15 / IP65 / CRI90 / SDCM<5 / 110 or 220V-240VAC 50/60Hz
- Options: White/Black trim, white/black/shining silver/gold reflector options. Dimmable.



Ref Number	GR-DLG-10WW	GR-DLG-10WW*2	GR-DLG-10WW*3
Size(mm)	LW92*H62	L169*W92*H62	L246*W92*H62
Outcut(mm)	LW80	L160*W80	L235*W80
Remark	Square	Double	Triple



■ Waterproof Trimless LED Downlight- Round/Square/Double/Triple options

- Beam angle 36° or 50°/ Deep design UGR<17 / 110/220-240VAC 50/60Hz / IP65 waterproof
- Option: Matt White/ black options; Triac dimmable /0-10V dimmable / DALI dimmable options.



Ref Number	GR-DL-7WF-03	GR-DL-10WF-03	GR-DL-10WF-03	GR-DL-10WF*2	GR-DL-10WF*3
Outcut(mm)	Ø55mm	Ø75mm	LW82mm	L160*W80mm	L238*W80mm
Remark	Round	Round	Square	Double	Triple





Feature

- Philips/LiFud/Eagleries driver brand as standard.220/240VAC 50/60Hz.PF>0.5 as standard, 0.9PF options. 3/5Years warranty
- Bridgelux/Osram Chips, CRI>80 or 90, SDCM<3, 100-140LM/W
- Triac/0-10V/DALI dimmable/Emergency kits/Zigbee smart available.

Adjustable Spotlight (GR-DL-G-6)

- Beam angle:15/24/36° / adjustable 25° / Deep reflector UGR<17 / IP20 / CRI90 / 110/220-240VAC 50/60Hz
- Options: White/Black/Silver/Gun Black reflectors options; triac /0-10V/ DALI dimmable.



Ref Number	GR-DL-7WG-6	GR-DL-10WG-6	GR-DL-18WG-6	GR-DL-25WG-6
Wattages	5W-7W	10W	15W-18W	25W
Size(mm)	Ø62*H70	Ø83*H80	Ø105*H95	Ø130*H105
Outcut(mm)	Ø55	Ø75	Ø95	Ø115

Top Project Adjustable Spotlight (GR-DL-G-3)

- Beam angle:15/24/36/50°.UGR<15.IP44 CRI90.110/220-240VAC 50/60Hz
- Black/White/Shining silver/Gold/ gun black/ rose gold reflector options



Ref Number	GR-DL-7WG-3	GR-DL-12WG-3	GR-DL-15WG-3	GR-DL-20WG-3	GR-DL-24WG-3	GR-DL-40WG-3	GR-DL-45WG-3
Wattages	7W ±5%	10W-12W± 5%	15W± 5%	20W± 5%	24W± 5%	30W -40W	45W
Size(mm)	Ø61*H82	Ø82*H81	Ø82*H92	Ø93*H102	Ø103*H106	Ø135*H131	Ø155*H149
Outcut(mm)	Ø55	Ø75	Ø75	Ø85	Ø95	Ø120-125	Ø140-145

Commercial Adjustable Deep Downlight (GR-DL-G-4)

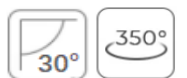
- Beam angle:15/24/36/60° options. White/black housing options / IP20
- Adjust 30°.Super anti glare.Bridgelux/Osram COB chips.110/220-240VAC 50/60Hz



Ref Number	GR-DL-7WG-4	GR-DL-12WG-4	GR-DL-15WG-4	GR-DL-20WG-4	GR-DL-30WG-4
Wattages	7W ± 5%	12W± 5%	15W± 5%	20W± 5%	30W±5%
Size(mm)	Ø65*H70mm	Ø85*H90mm	Ø105*H107	Ø105*H107	Ø130*H125
Outcut(mm)	Ø55	Ø75	Ø95	Ø95	Ø120-125

Gimbal & Adjustable Downlight (GR-DL-G-8)

- 360° rotation + 30° adjustable / CRI>90 / UGR<15 Deep design / 110 or 220-240VAC 50/60Hz /15/24/36° / IP44
- Options: White/black/shining silver / gun black/ Rose Gold reflectors options / Matt white or black trim options / dimmable



Ref Number	GR-DL-15WG-8	GR-DL-20WG-8	GR-DL-30WG-8	GR-DL-35WG-8	GR-DL-40WG-8
Wattages	12W-15W	18W-20W	30W±5%	35W±5%	40W±5%
Size(mm)	Ø82*H95mm	Ø104*H120mm	Ø120*H125	Ø130*H132	Ø130*H132
Outcut(mm)	Ø75	Ø95	Ø105-110	Ø115-120	Ø115-120

■ Gimbal & Adjustable Eyeball Downlight (GR-DL-G-9)

- 360° rotation + 25° adjustable / CRI>90 / UGR<15 Deep design / 110 or 220-240VAC 50/60Hz / 15/24/36°/50° / IP44
- Options: White/black/shining silver / gun black/ Rose Gold reflectors options / Matt white or black trim options / dimmable



Ref Number	GR-DL-15WG-9	GR-DL-24WG-9	GR-DL-30WG-9	GR-DL-35WG-9
Wattages	12W-15W	20W-24W	30W±5%	35W±5%
Size(mm)	Ø88*H75mm	Ø108*H93mm	Ø118*H95	Ø118*H95
Outcut(mm)	Ø75-80	Ø95	Ø105	Ø105

■ Pull out LED Downlight (GR-DLG-F)-- (Round & Square)

- Put in & Out desgin / 350° rotation + 90° adjustable / CRI>90 / UGR<19 / 110 or 220-240VAC 50/60Hz / 15/24/36° / IP20
- Options: Matt white or black trim options / dimmable / Round or Square shape options.



Ref Number	GR-DLG-9WF	GR-DLG-15WF	GR-DLG-20WF	GR-DLG-25WF
Wattages	7W-9W	15W	20W	25W
Size(mm)	Ø90*H90	Ø115*H105	Ø135*H140	Ø165*H150
Outcut(mm)	Ø75	Ø95	Ø120	Ø150

■ Gimbal & Adjustable Spotlight (GR-DL-G-7)

- 350° rotation + 90° adjustable / CRI>90 / 110 or 220-240VAC 50/60Hz / 15/24/36° / IP20
- Options: Matt white or black body options / Triac dimmable, 0-10V dimmable, DALI dimmable options / Honeycomb



Ref Number	GR-DL-10WG-7	GR-DL-15WG-7	GR-DL-20WG-7	GR-DL-30WG-7	GR-DL-35WG-7
Wattages	10W	15W	20W±5%	30W±5%	35W±5%
Size(mm)	Ø50*H100mm	Ø60*H135mm	Ø60*H135	Ø80*H150	Ø80*H170
Outcut(mm)	Ø75	Ø75	Ø75	Ø75	Ø75

■ Long Cylinder Recessed Downlight (Adjustable)

- Beam angle:24°, CRI90. 100-240VAC 50/60Hz
- Black/White body, 360° rotation.



Ref Number	GR-DL-5WC100	GR-DL-5WC200	GR-DL-5WC300
Wattages	5W	5W	5W
Size(mm)	Ø65*L100	Ø65*L200	Ø65*L300
Outcut(mm)	Ø58-60	Ø58-60	Ø58-60

■ Small Hole LED Spotlights (GR-DL-G-12)

- Small lighting hole, super anti glare / 25° adjustable / CRI>90 / UGR<15 Deep design / 110 or 220-240VAC 50/60Hz / 15/24/36°/50° / IP44
- Options: Matt white or black trim options / Triac, 0-10V, DALI dimmable options / Emergency backup



Ref Number	GR-DL-7WG-12	GR-DL-10WG-12	GR-DL-12WG-12	GR-DL-18WG-12	GR-DL-20WG-12
Wattages	7W ± 5%	10W±5%	12W±5%	18W±5%	20W±5%
Size(mm)	Ø62*H70mm	Ø83*H80mm	Ø84*H90	Ø105*H100	Ø105*H100
Outcut(mm)	Ø55	Ø75	Ø75	Ø95	Ø95

■ Small Hole LED Spotlights (GR-DL-C-1)

- Small lighting hole, super anti glare / CRI>80 / UGR<15 Deep design / 110 or 220-240VAC 50/60Hz / 24/36° Beam angle / IP44
- Options: Gun black, white, gold, shining silver reflector options / Triac, 0-10V, DALI dimmable options / Emergency backup



Ref Number	GR-DL-7WC-1	GR-DL-12WC-1	GR-DL-20WC-1	GR-DL-25WC-1	GR-DL-30WC-1
Wattages	7W ± 5%	12W±5%	20W±5%	25W±5%	30W±5%
Size(mm)	Ø65*H38mm	Ø80*H38mm	Ø106*H38	Ø130*H39	Ø150*H40
Outcut(mm)	Ø50	Ø75	Ø95	Ø120	Ø140

■ Asymmetric LED Spotlights (GR-DL-C-2)

- Asymmetric reflectors / CRI>90 / UGR<19 / 110 or 220-240VAC 50/60Hz / 15/24/36°/50° / IP44 for front
- Options: Shining silver, Gun black reflectors options / Triac, 0-10V, DALI dimmable options



Ref Number	GR-DL-10WC-2	GR-DL-12WC-2	GR-DL-15WC-2	GR-20WC-2
Wattages	10W	12W	15W	18W-20W
Size(mm)	Ø84*H65	Ø84*H65	Ø104*H73	Ø104*H73
Outcut(mm)	Ø75	Ø75	Ø95	Ø95

■ Zoomable Beam angle Surface Spot Light (GR-DL-G-15)

- Beam angle can be changed from 15° to 60° / 110/220-240VAC 50/60Hz / CRI:>90



Ref Number	GR-DL-10WG-15	GR-DL-15WG-15	GR-DL-20WG-15	GR-DL-25WG-15	GR-DL-30WG-15
Power	10W±5%	15W±5%	20W±5%	25W±5%	30W±5%
Size(mm)	Φ55x135	Φ65x165	Φ75x170	Φ75x170	Φ80x200mm

■ Surface Spot Light (GR-FM-T-6)

- Beam angle can be changed from 15° to 60° / 110/220-240VAC 50/60Hz / CRI:>90



Ref Number	GR-FM-9WT-6	GR-FM-12WT-6
Power	9W±5%	12W±5%
Size(mm)	Φ65x120	Φ80x160

■ Square Adjustable Spotlight (GR-DL-V)

- Beam angle:15/24/36/50°,IP44, trim and trimless option.110/220-240VAC 50/60Hz
- Black/White/Shining silver/Gold/ gun black/ rose gold reflector options



Ref Number	GR-DL-7WV	GR-DL-12WV	GR-DL-15WV	GR-DL-20WV
Wattages	5W-7W	10W-12W	15W	18W-20W
Size(mm)	LW65*H95mm	LW85*H106mm	LW85*111mm	LW105*105mm
Output(mm)	Ø55	Ø75	Ø75	Ø95

■ Pull in & Out Grille Downlight (GR-DLG-F)

- Beam angle:15/24/36°,IP20.Put in & Out and 360° rotation.
- Bridgelux/Osram COB chips,100lm/W,CRI90.110/220-240VAC 50/60Hz



Ref Number	GR-DLG-9WF*2	GR-DLG-15WF*2	GR-DLG-20WF*2	GR-DLG-25WF*2
Wattages	9W*2	15W*2	20W*2	25W*2
Size(mm)	L170*W90	L210*W115	L250*W140	L250*W140
Output(mm)	L155*W75	L190*95	L235*W120	L235*W120

■ Adjustable Square Downlight (GR-DLG-E)

- Adjustable body 30°. white/black housing options. 110-240VAC 50/60Hz.
- Beam angle:24/36°; Bridgelux/Osram COB, CRI90-97. 100lm/W output.



Ref Number	GR-DLG-10WE	GR-DLG-15WE	GR-DLG-20WE	GR-DLG-25WE
Wattages	10W±5%	15W ±5%	20W±5%	25W±5%
Size(mm)	L125*W125	L145*W145	L185*W185	L185*W185
Output(mm)	L105*W105	L125*W125	L160*W160	L160*W160

■ Slim Square LED Downlight (GR-DL-E-8)

- Beam angle:120°,IP44. Osram SMD Chips, top quality for projects.110/220-240VAC 50/60Hz
- White/black body options. Black/White/Shining silver/Gold/ gun black/ rose gold reflector options



Ref Number	GR-DL-9WE-8	GR-DL-12WE-8	GR-DL-15WE-8	GR-DL-20WE-8	GR-DL-25WE-8	GR-DL-35WE-8
Wattages	9W ± 5%	12W± 5%	15W-18W	20W	24W± 5%	30W-35W
Size(mm)	LW100*H43	LW120*H43	LW150*H43	LW175*H45	LW197*H50	LW230*H55
Output(mm)	75*75	95*95	125*125	155*155	175*175	200*200

■ Fixed Recessed Linear LED Spotlight (GR-DL-L-1)

- Beam angle:15/24/36°,IP44, 2W/Led chips.Bridgelux SMD chips, 100lm/w.CRI80/90
- Black/White body, and white /black reflector options. DALI/0-10V dimmable options.110/220-240VAC 50/60Hz



Ref Number	GR-DL-2WL-1	GR-DL-4WL-1	GR-DL-6WL-1	GR-DL-10WL-1	GR-DL-20WL-1	GR-DL-30WL-1
Wattages	2W	4W	6W	9W-10W	18W-20W	27W-28W
Size(mm)	LW45*H47	L68*W45*H47	L95*W45*H47	L145*W45*H39	L280*W45*H39	L415*W45*H39
Output(mm)	L38*W38	L60*W38	L85*W38	L138*W38	L270*W38	L405*W38

■ Adjustable Recessed Linear Spotlight (GR-DL-L-2)

- Beam angle:15/24/36°,IP44, 2W/Led chips. Adjustable design.Bridgelux SMD chips, 100lm/w.CRI80/90
- Black/White body, and white /black reflector options. DALI/0-10V dimmable options



Ref Number	GR-DL-10WL-2	GR-DL-20WL-2	GR-DL-30WL-2
Wattages	9W	18W-20W	27W-28W
Size(mm)	LW45*H47	L68*W45*H47	L95*W45*H47
Output(mm)	L38*W38	L60*W38	L85*W38



■ Trimless Fixed Linear LED Spotlight (GR-DL-L-3)

- Beam angle:15/24/36°,IP44, 2W/Led chips. Adjustable design.Bridgelux SMD chips, 100lm/w.CRI80/90
- Black/White body, and white /black reflector options. DALI/0-10V dimmable options.110/220-240VAC 50/60Hz



Ref Number	GR-DL-10WL-3	GR-DL-20WL-3	GR-DL-30WL-3	GR-DL-40WL-3
Wattages	9W ± 5%	18W±5%	28W±5%	36W ± 5%
Size(mm)	L140*105*H42	L273*105*H42	L430*105*H42	L540*W90*H46
Output(mm)	L145*W50	L275*W50	L430*W50	L540*W50



■ Surface Fixed Linear LED Spotlight (GR-DL-L-4)

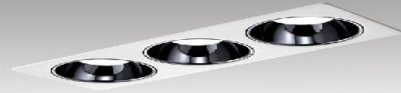
- Beam angle:15/24/36° for spotlights, 120° for linear profile lights,IP44, 100lm/w.CRI80/90
- Black/White body, and white /black reflector options.110/220-240VAC 50/60Hz



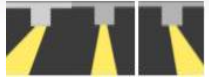
Ref Number	GR-DL-10WL-4	GR-DL-20WL-4	GR-DL-30WL-4
Wattages	10W	20W	30W
Size(mm)	141*34*57	273*34*57	414*34*57



Track installation option



Grid downlight fixture



Hot sale Deep LED Grille Downlight (GR-DLG-R)

- Deep reflector, UGR<15 / CRI90 / Die cast aluminum body / 110V or 220-240VAC 50/60Hz / 24/36/55° / IP44 front
- Options: White, black body options; / White, black,Gold, Shining silver reflector options / Triac, 0-10V, DALI dimmable options.



Ref Number	GR-DLG-10WR	GR-DLG-10WR*2
Wattages	10W	10W*2
Size(mm)	LW85*H59	L163*W85
Outcut(mm)	LW75	L155*W75



LED Grille Downlight (Fixed) (GR-DLG-A)

- Beam angle:24/36° / IP22 / Deep reflector UGR<19 anti glare / CRI>90 / 220-240VAC 50/60Hz
- Options: Black/White/silver reflector options / Dimmable / Honeycomb



Ref Number	GR-DLG-10WA	GR-DLG-10WA*2	GR-DLG-10WA*3
Wattages	10WW	10W*2	10W*3
Size(mm)	LW85*H68	L168*W85	L256*W85
Outcut(mm)	LW75	L160*W75	L245*W75

Adjustable Grille Downlight (GR-DLG-E)

- Beam angle:15/24/36°,IP20,adjustable 30°.110/220-240VAC 50/60Hz
- Black/White Body options. Bridgelux/Osram COB chips,100lm/W,CRI90.



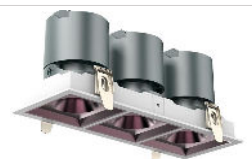
Ref Number	GR-DLG-10WE*2	GR-DLG-15WE*2	GR-DLG-20WE*2	GR-DLG-10WE*3	GR-DLG-15WE*3	GR-DLG-20WE*3
Wattages	10W*2	15W*2	20W*2	10W*3	15W*3	20W*3
Size(mm)	L225*W130	L255*W145	L330*W180	L325*W130	L365*W145	L430*W165
Outcut(mm)	L205*W115	L240*W125	L315*W165	L310*W115	L325*W125	L415*W145

Double & Triple LED Downlights (GR-DL-V)

- Adjustable 25° / Deep design UGR<17 / 110 or 220-240VAC 50-60Hz / IP44 / CRI>90 / 15/24/36/55° beam angle.
- Option: Triac dimmable /0-10V dimmable / DALI dimmable options/ White,black,shining silver, gold reflector option



Ref Number	GR-DL-10WV*2	GR-DLG-15WV*2	GR-DL-10WV*3	GR-DL-15WV*3
Wattages	10W*2	15W*2	10W*3	15W*3
Size(mm)	L168*W90	L168*W90	L250*W90	L250*W90
Outcut(mm)	L155*W75	L155*W75	L240*W75	L240*W75



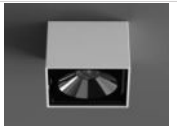


■ Short Surface Grille Downlight (GR-DLG-Q)

- Beam angle:24/36° / IP44 for front / CRI90 / UGR<19 / 110V or 220-240VAC 50/60Hz
- Options: White, black body options/ White or black reflector options



Ref Number	GR-DLG-9WQ	GR-DLG-15WQ
Wattages	9W	7W*2
Size(mm)	LW71*H59	L141*W71*H59



■ Slim Surface Grille Downlight (GR-DLG-L)

- Beam angle:15/24/36° ,IP20, Bridgelux/Osram COB 100lm/w.CRI90
- Black/White body, and white /black reflector options.Eagleries driver,220-240VAC



Ref Number	GR-DLG-10WL	GR-DLG-10WL*2	GR-DLG-10WL*3	GR-DLG-10WL*4
Wattages	10W	10W*2	10W*3	10W*4
Size(mm)	115*115*55	223*115*55	328*115*55	225*225*55

■ Gimbal Grille Downlight (GR-DLG-G)

- 24/36° beam angle / CRI90 / 350° rotation + 90° adjustable / 110V or 220V-240VAC 50/60Hz.
- Options: White,black body finished options / black, white reflector options / Dimmable



Ref Number	GR-DLG-10WG	GR-DLG-10WG*2	GR-DLG-10WG*3	GR-DLG-10WG*4
Wattages	10W	10W*2	10W*3	10W*4
Size(mm)	D70*H85	L163*W70*H85	L255*W70*H85	L178*W178*H100

■ Gimbal Grille Downlight (GR-DLG-H)

- Beam angle:15/24/36° ,IP20, 100lm/w.CRI90, Bridgelux/Osram COB,
- Black/White body, available to be 360° rotation+ 30° adjustable light direction.110/220-240VAC 50/60Hz



Ref Number	GR-DLG-10WH	GR-DLG-10WH*2	GR-DLG-10W*4
Wattages	10W	10W*2	10W*4
Size(mm)	LW105*H100	L205*W105	LW220*125





■ Surface LED Spotlight (GR-FM-B)

- Beam angle: 60°. IP20-IP44, 110/220-240VAC 50/60Hz
- White/black body options. Surface mount/Pendant mount options.

Ref Number	GR-FM-12WB	GR-FM-15WB	GR-FM-20WB	GR-FM-30WB
Size(mm)	Ø75*H130	Ø95*H150	Ø115*H160	Ø140*H160
Wattages	10W-12W	15W	20W	30W



Suspension

■ Surface LED Spotlight (GR-FM-A)

- Beam angle: 15/24/36°. IP20-IP44, White/black body options. 110/220-240VAC 50/60Hz
- Black/White/Shining silver/Gold/ gun black/ rose gold reflector options



Ref Number	GR-FM-7WA	GR-FM-10WA	GR-FM-12WA	GR-FM-15WA	GR-FM-20WA
Size(mm)	Ø55*H120	Ø75*H150	Ø75*H150	Ø95*H150	Ø115*H160
Wattages	7W	10W	12W	15W	20W



Suspension option

■ Surface LED Spotlight (25W-60W)

- Beam angle: 24/36/60°. IP20-IP44, White/black body options
- Black/White/Shining silver/Gold/ gun black/ rose gold reflector options. 110/220-240VAC 50/60Hz



Ref Number	GR-FM-25WA	GR-FM-30WA	GR-FM-35WA	GR-FM-45WA	GR-FM-60WA
Size(mm)	Ø120*H120	Ø140*H140	Ø160*H160	Ø160*H160	Ø190*H190
Wattages	25W	30W	35W	45W	60W



■ High Power Surface Downlight (50W-200W)

- Beam angle: 60°. IP20-IP44, White/black body options. Surface/Pendant options
- Bridgelux/Osram COB chips for 50W-80W, SMD for 100W-200W, 100LM/W Output.



Ref Number	GR-FM-50WR	GR-FM-80WR	GR-FM-100WR	GR-FM-150WR	GR-FM-200WR
Size(mm)	Ø105*H95	Ø138*H95	Ø160*H105	Ø180*H110	Ø220*H120
Wattages	50W	70-80W	100W	150W	180W-200W



50W-80W

Waterproof Surface Downlight (GR-FM-F)

- Beam angle:50°.IP65 waterproof for wet area.110/220-240VAC 50/60Hz
- Black/White body. Bridgelux/Osram chips, CRI90, 100LM/W Output.



Ref Number	GR-FM-10WF	GR-FM-15WF	GR-FM-20WF	GR-FM-25WF	GR-FM-30WF	GR-FM-40WF	GR-FM-50WF
Size(mm)	Ø75*H118	Ø95*H128	Ø95*H128	Ø120*H150	Ø120*H150	Ø148*H180	Ø171*H200
Wattages	10W	15W	20W	25W	30W	40W	50W

Small Lighting Hole Surface Spotlights (GR-FM-P)

- Beam angle:24/36° / UGR<15 / IP44 for front / CRI90 / 110/220-240VAC 50/60Hz
- Options: Black/White body options / White, black, gold, shining silver reflector options

Ref Number	GR-FM-6WP	GR-FM-8WP	GR-FM-14WP
Size(mm)	Ø50*H70	Ø74*H90	Ø95*H110
Wattages	6W ± 5%	8W ± 5%	14W±5 %



Adjustable Surface Downlight (GR-FM-A-8)

- Adjustable 25° direction / CRI90 / 15/24/36° beam angle/ 110 or 220-240VAC 50/60Hz
- Options: White , Matt black body options / Triac,0-10V, DALI dimable options / PF>0.8

Ref Number	GR-FM-7WA-8	GR-FM-10WA-8	GR-FM-12WA-8
Size(mm)	Ø70*H55	Ø90*H65	Ø115*H85
Wattages	7W	10W	12W



Surface Cylinder Spotlights (GR-FM-G)

- Beam angle 60° / IP44 for front / CRI>90 / Aluminum body / 110V or 220-240VAC 50/60Hz
- Options: Matt black, matt white body options / Triac dimmable, 0-10V, DALI dimmable options.

Ref Number	GR-FM-10WG	GR-FM-12WG	GR-FM-15WG	GR-FM-20WG	GR-FM-30WG
Size(mm)	Ø80*H85	Ø90*H90	Ø100*H115	Ø110*H120	Ø130*H150
Wattages	10W±5%	12W± 5%	15W± 5%	20W± 5%	30W±5%



Suspended Long Cylinder Spotlight

- Beam angle:24°,IP44, Bridgelux COB.CRI90. 90lm/W.110/220-240VAC 50/60Hz
- Black/White/Gold bodyoptions, and white /black reflector options.The rope is 1.5m/pcs

Ref Number	GR-DL-40300	GR-DL-40500	GR-DL-50300	GR-DL-50500	GR-DL-50700
Wattages	5W	5W	5W	5W	5W
Size(mm)	Ø40*H300	Ø40*H500	Ø55*H300	Ø55*H500	Ø55*H700



■ Aluminum Deep Surface Spotlight with Large distribution (GR-FM-K)

- Aluminum body / Deep design, UGR<19 anti glare / 120° beam angle / CRI>80 / 110V or 220-240VAC 50/60Hz.
- Options: Black/White bodyoption / Triac dimmable, 0-10V, DALI dimmable options



Ref Number	GR-DL-7WK	GR-DL-10WK	GR-DL-15WK	GR-DL-20WK	GR-DL-30WK
Size(mm)	Ø85*H75	Ø99*H75	Ø120*H80	Ø152*H90	Ø168*H90
Wattages	7W ±5%	10W±5%	15W± 5%	20W± 5%	30W±5%



■ Economic Metal Deep Surface Downlight (GR-FM-K-1)

- Metal body / Deep design, UGR<19 anti glare / 120° beam angle / CRI>80 / 110V or 220-240VAC 50/60Hz.
- Options: Black/White bodyoption / Triac dimmable, 0-10V, DALI dimmable options



Ref Number	GR-DL-12WK-1	GR-DL-15WK-1	GR-DL-18WK-1	GR-DL-24WK-1
Size(mm)	Ø104*H75	Ø138*H75	Ø180*H75	Ø180*H75
Wattages	12W	15W	18W	24W



■ Classic Surface Downlight (GR-FM-K-2)

- Metal body / Deep design, UGR<19 anti glare / 120° beam angle / CRI>80 / 110V or 220-240VAC 50/60Hz.
- Options: Black/White bodyoption / Triac dimmable, 0-10V, DALI dimmable options



Ref Number	GR-FM-12WK-2	GR-FM-15WK-2	GR-FM-18WK-2	GR-FM-24WK-2
Size(mm)	Ø135*H146	Ø165*H180	Ø185*H180	Ø220*H215
Wattages	12W	15W	18W	24W

■ Economic Metal Surface Downlight (GR-FM-Q)

- Metal body / 120° beam angle / CRI>80 / 110V or 220-240VAC 50/60Hz.
- Options: Black/White bodyoption / Suspension / Triac dimmable, 0-10V, DALI dimmable options / Built-in Emergency backup



Ref Number	GR-FM-7WQ	GR-FM-9WQ	GR-FM-12WQ	GR-FM-18WQ	GR-FM-24WQ
Size(mm)	Ø105*H75	Ø138*H75	Ø160*H75	Ø178*H75	Ø230*H100
Wattages	7W-9W	9W-12W	12W-15W	18W	24W

■ Economic Slim Surface Downlight (MOQ:500PCS)

- Slim metal body / 120° / Isolated driver / 220V-240VAC 50/60Hz



Ref Number	GR-FM-9WU	GR-FM-12WU	GR-FM-18WU	GR-FM-24WU	GR-FM-30WU
Size(mm)	Ø105*H40	Ø140*H40	Ø180*H40	Ø232*H40	Ø300*H42
Wattages	9W	12W	15W-18W	18W-24W	24W-30W



■ Backlit Slim Surface Downlight (GR-FM-K-3)

- Aluminum body / Backlit design, good heat performance / 120° / IP44 / 110V or 220V-240VAC 50/60Hz
- Options: Black/White body / Triac, 0-10v, DALI dimmable



Ref Number	GR-FM-12WK-3	GR-FM-15WK-3	GR-FM-18WK-3	GR-FM-24WK-3	GR-FM-30WK-3	GR-FM-36WK-3
Size(mm)	Ø 120*H38mm	Ø 120*H38mm	Ø175*H38mm	Ø175*H38	Ø225*H40	Ø225*H40
Wattages	12W	15W	18W	24W	30W	35W

■ Short Surface Downlight with Large distribution (GR-FM-B-1)

- Beam angle 120° / IP20 / CRI90 / with Isolated driver / 110 or 220-240VAC 50/60Hz
- Options: Matt black, white, gold finished options.

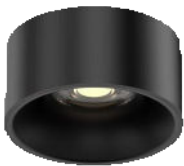


Ref Number	GR-FM-7WB-1	GR-FM-10WB-1	GR-FM-15WB-1	GR-FM-18WB-1
Size(mm)	Ø70*H45mm	Ø90*H55	Ø115*H65	Ø135*H65
Wattages	5W-7W	9W-10W	12W-15W	15W-18W



■ Fixed Short Deep Surface Downlight (GR-FM-A-2)

- UGR<19 Anti glare / IP20 / CRI90 / with Isolated driver / 110 or 220-240VAC 50/60Hz /PF0.5
- Options: Matt black, white body options / options.PF>0.8 / black, white, gold, shining reflector options



Ref Number	GR-FM-7WA-2	GR-FM-10WA-2	GR-FM-15WA-2	GR-FM-18WA-2
Size(mm)	Ø59*H58	Ø73*H70	Ø86*H78	Ø110*H88
Wattages	7W	9W-10W	12W-15W	18W



■ Gimbal & Adjustable Eyeball Surface Downlight (GR-FM-A-6)

- 360° rotation + 30° adjustable / CRI>90 / UGR<19 Anti-glare / 110 or 220-240VAC 50/60Hz / 15/24/36° / IP20
- Options: White and black reflectors options / Matt white or black trim options / dimmable



Ref Number	GR-FM-5WA-6	GR-FM-10WA-6	GR-FM-12WA-6	GR-FM-15WA-6
Wattages	5W	10W	12W	15W
Size(mm)	Ø60*H69mm	Ø80*H94mm	Ø80*H94	Ø100*H105



■ 2026 New Surface LED Downlight (GR-FM-A-3)

- PMMA Cover new design / CRI90 / UGR<19 Anti glare / 110 or 220-240VAC 50/60Hz
- Options: White / Matt black body options / Triac,0-10V, DALI dimmable options / 15° 24° 36°55° beam angle options.



Ref Number	GR-FM-7WA-3	GR-FM-15WA-3	GR-FM-25WA-3	GR-FM-35WA-3	GR-FM-40WA-3
Size(mm)	Ø54*H80	Ø74*H100	Ø94*H110	Ø114*H140	Ø140*H165
Wattages	7W ± 5%	15W ±5%	25w	35W±5%	40W±5%



■ IP65 Waterproof Surface Spotlights (GR-FM-T-3)

- 350° rotation +90° adjustable / IP65 waterproof / CRI90 / 30° beam angle / 110V or 220VAC 50/60Hz
- Options: Triac, 0-10V.DALI dimmable



Ref Number	GR-FM-5WT-3	GR-FM-7WT-3	GR-FM-10WT-3
Size(mm)	Ø58*L90	Ø58*L90	Ø58*L90
Wattages	5W	7W	10W





■ 360° Rotation Surface Spotlights (GR-FM-T)

- 360° rotation + 90° adjustable / CRI>90 / UGR<19 / 110 or 220-240VAC 50/60Hz / 15/24/36° / IP20
- Options: Black, White, gold body options / Triac, 0-10V, DALI dimmable options



Ref Number	GR-FM-5WT	GR-FM-7WT	GR-FM-9WT	GR-FM-12WT	GR-FM-15WT	GR-FM-20WT
Size(mm)	Ø30*L80mm	Ø40*L100mm	Ø50*L120mm	Ø55*L120mm	Ø55*L160mm	Ø55*L160mm
Wattages	5W	7w ±5%	9W±5%	12W ±5%	15W ± 5%	20W ± 5%



■ Surface Rotation Spotlights (GR-FM-T-1)

- 350° rotation + 90° adjustable / CRI>90 / UGR<19 / 110 or 220-240VAC 50/60Hz / 15/24/36° / IP20
- Options: Black, White options / Triac, 0-10V, DALI dimmable options / Honeycomb

Ref Number	GR-FM-10WT-1	GR-FM-15WT-1	GR-FM-20WT-1	GR-FM-30WT-1	GR-FM-35WT-1
Power	Ø50*L100mm	Ø60*L135mm	Ø60*L135mm	Ø80*L150mm	Ø80*L170mm
Dimension	10W	15W ±5%	20W±5%	30W ±5%	35W ±5%



■ Competitive Gimbal & Fold Surface Spotlight (GR-FM-T-2)

- 350° rotation & fold design / CRI90 / UGR>19 Anti glare / 110 or 220-240VAC 50/60Hz /24°
- Options: White , Matt black body options / Triac,0-10V, DALI dimable options



Ref Number	GR-FM-5WT-2	GR-FM-9WT-2	GR-FM-12WT-2	GR-FM-18WT-2
Size(mm)	Ø60*H80	Ø80*H100	Ø88*H105	Ø100*H120
Wattages	5W	9W	12W ±5%	18W ±5%

■ Gimbal & Fold Surface Spotlight

- 350° rotation & fold design / CRI90 / UGR>19 Anti glare / 110 or 220-240VAC 50/60Hz
- Options: White / Matt black body options / black, white, gun black, shining silver, gold reflector options / 24° 36° beam angle.



Ref Number	GR-DL-7WZ-3	GR-DL-10WZ-3	GR-DL-15WZ-3	GR-DL-20WZ-3
Size(mm)	Ø60*H80	Ø76*H95	Ø87*H100	Ø110*H120
Wattages	7W	10W	15W	20W



■ Surface Fold Cylinder Spotlight

- Beam angle:15/24/36° / CRI90 / IP20 / 110V or 220V-240VAC 50/60Hz
- Options: Black White body options / Dimmable / Honeycomb.



Ref Number	GR-DL-10WZ-5	GR-DL-15WZ-5	GR-DL-20WZ-5
Size(mm)	Ø60*H180	Ø60*H180	Ø75*H200
Wattages	10W	15W	20W



■ Backlit Slim Square Surface Downlight (GR-FM-D-1)

- Aluminum body / Backlit design, good heat performance / 120° / IP44 / 110V or 220V-240VAC 50/60Hz
- Options: Black/White body / Triac, 0-10v, DALI dimmable



Ref Number	GR-FM-12WD-1	GR-FM-15WD-1	GR-FM-18WD-1	GR-FM-24WD-1	GR-FM-30WD-1	GR-FM-36WD-1
Size(mm)	LW 120*H40mm	LW 120*H40mm	LW 175*H40mm	LW175*H40	LW225*H40	LW225*H40
Wattages	12W	15W	18W	24W	30W	35W

■ Waterproof Surface Downlight

- Beam angle:50°.IP65 waterproof for wet area.110/220-240VAC 50/60Hz
- Black/White body. Bridgelux/Osram chips, CRI90, 100LM/W Output.



Ref Number	GR-FM-10WH	GR-FM-15WH	GR-FM-25WH	GR-FM-30WH
Size(mm)	LW80*H83	LW100*H96	LW130*H123	LW150*H136
Wattages	10W	15W	20W or 25W	30W

■ Square Surface Downlight

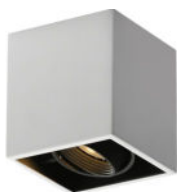
- Beam angle:24/36°.IP22 ,different color reflector options.110/220-240VAC 50/60Hz
- Black/White body. Bridgelux/Osram chips, CRI90, 100LM/W Output.



Ref Number	GR-FM-7WD	GR-FM-10WD	GR-FM-12WD	GR-FM-15WD	GR-FM-20WD
Size(mm)	LW55*H80	LW75*H95	LW75*H130	LW95*H110	LW115*H110
Wattages	7W	10W	12W	15W	20W

■ Adjustable Square Surface Downlight (GR-FM-D-2)

- Adjustable 25° direction / CRI90 / 15/24/36° beam angle/ 110 or 220-240VAC 50/60Hz
- Options: White, black body options; / White, black reflector options / Triac, 0-10V, DALI dimmable options.



Ref Number	GR-FM-7WD-2	GR-FM-12WD-2	GR-FM-15WD-2	GR-FM-18WD-2	GR-FM-20WD-2
Size(mm)	LW60*H69	LW80*H94	LW80*H94	LW100*H105	LW100*H105
Wattages	7W	12W	15W	18W	20W

■ Classic Surface Grille Downlight

- Beam angle:24/36°.IP20, 100lm/w.CRI80/90
- 30° adjustable, Black/White body,.110/220-240VAC 50/60Hz



Ref Number	GR-DLG-10WK	GR-DLG-15WK	GR-DLG-20WK	GR-DLG-10WK*2	GR-DLG-15WK*2	GR-DLG-20WK*2
Wattages	10W	15W	20W-25W	10W*2	15W*2	20W-25W*2
Size(mm)	LW100*H100	LW115*H140	LW150*H180	L200*W100	L230*W115	L300*W150



Indoor Slim Surface Ceiling Light (GR-CD-A)

- IP44 for front, IP20 for back.
- Metal bottom+ PP Cover.Beam angle:120°.100LM/W Output. 110/220-240VAC 50/60Hz



Ref Number	GR-CD-12WA	GR-CD-18WA	GR-CD-24WA	GR-CD-36WA
Size(mm)	Ø280*H50	Ø320*H50	Ø380*H50	Ø450*H50
Wattages	12W	18W	24W	32-36W



Indoor Slim Surface Ceiling Light (Side-lighting)

- IP44 for front, IP20 for back.White/black/Silver frame options
- Metal base+ PP Cover.Beam angle:120°.100LM/W Output. 110/220-240VAC 50/60Hz



Ref Number	GR-CD-12WB	GR-CD-18WB	GR-CD-24WB	GR-CD-30WB	GR-CD-36WB	GR-CD-42WB
Size(mm)	Ø230*H50	Ø270*H50	Ø300*H50	Ø350*H50	Ø390*H50	Ø480*H50
Wattages	12W	18W	24W	30W	36W	40W-42W



IP65 Slim Surface Ceiling Light (GR-CD-D)

- Beam angle:120°.IP65,90-100LM/W Output.
- Whole Plastic body.Available to be CCT tunable by switch on/off.110/220-240VAC 50/60Hz



Ref Number	GR-CD-12WD	GR-CD-18WD	GR-CD-24WD	GR-CD-36WD
Size(mm)	Ø220*H50	Ø300*H50	Ø370*H50	Ø470*H50
Wattages	12W	18W-20W	24W-30W	36W-40W



IP65 Surface Ceiling Light (GR-CD-H)

- Beam angle:120°.IP65,100LM/W Output.110/220-240VAC 50/60Hz
- Whole Plastic body.available to be motion sensor/ Emergency kits.



Ref Number	GR-CD-12WH	GR-CD-15WH	GR-CD-18WH	GR-CD-24WH	GR-CD-30WH
Size(mm)	Ø275*H80	Ø275*H80	Ø275*H80	Ø325*H90	Ø325*H90
Wattages	12W	15W	18W	24W	30W





Feature

- SUNCOM/Philips/Meanwell/DONE/SOSEN/MOSO driver brand .100/220-265VAC 50/60Hz. 3/5Years warranty
- Surge protection 4-10KV, Lifetime >50000Hrs. PF>0.95. 150-180LM/W output philips chips.
- available to be 0-10V/DALI dimmable, Emergency kits, and radar sensor.

High Lumen Round High Bay (GR-HB-B)

- Beam angle:90°/120°.IP65.110-265VAC 50/60Hz
- Philips chips 150-160lm/W; SUMCOM/PHILIPS Driver options. Emergency kits available



Ref Number	GR-HB-100WB	GR-HB-150WB	GR-HB-200WB	GR-HB-240WB
Size(mm)	Ø250*H280	Ø300*H280	Ø345*H280	Ø400*280
Wattages	70W-100W	150W	200W	240W

Round High Bay (GR-HB-E)

- Beam angle:90°/120°.IP65.110-265VAC 50/60Hz
- Philips chips 150-160lm/W; SUMCOM/PHILIPS Driver options. Emergency kits available



Ref Number	GR-HB-100WE	GR-HB-150WE	GR-HB-200WE	GR-HB-240WE
Size(mm)	Ø250*H280	Ø300*H280	Ø345*H280	Ø400*280
Wattages	70W-100W	150W	200W	240W

LED High Bay (GR-HB-B-02)

- Beam angle:60°/90°/120°.IP65. 150-200lm/W output.
- Options: Radar sensor / Dimmable



Ref Number	GR-HB-100WB-1	GR-HB-150WB-1	GR-HB-200WB-1	GR-HB-240WB-1	GR-HB-300WB-1	GR-HB-500WB-1
Size(mm)	Ø248*H175	Ø308*H175	Ø360*H175	Ø360*175	Ø360*175	Ø360*175
Wattages	100W	150W	200W	240W	300W	480W-500W

CCT &Watts Selectable High Bay

- Beam angle:60°/90°/120°.IP65. 0-10V/DALI dimming options
- With dial switch to select CCT from 3000K to 6000K, select wattage from 100%-80%-60%.



Ref Number	GR-HB-100WB-CCT	GR-HB-150WB-CCT	GR-HB-200WB-CCT	GR-HB-240WB-CCT
Size(mm)	Ø248*H175	Ø308*H175	Ø360*H175	Ø360*175
Wattages	100W	150W	200W	240W



■ Linear High Bay (50W/Modular)

- Beam angle:60°/90°/70°*150°.IP65. 110-120lm/W output.110-265VAC 50/60Hz
- 50W/Modular, 100W with 2modular, 150W with 3 modular....Surface/Pendant installation options



Ref Number	GR-HB-50WL	GR-HB-100WL	GR-HB-150WL	GR-HB-200WL
Size(mm)	Ø248*H175	Ø308*H175	Ø360*H175	Ø360*175
Wattages	50W	100W	150W	200W



■ LED Flat High Bay (GR-HB-L-2)

- Aluminum body+ Glass cover / IP65 waterproof / CRI>70 / 130lm/w outout / 110-277VAC 50/60Hz
- Options: 30°/60°/90° / T2 /T3 /T4 beam angle.



Ref Number	GR-HB-100WL-2	GR-HB-150WL-2	GR-HB-200WL-2	GR-HB-240WL-2	GR-HB-300WL-2
Size(mm)	386*276*H57mm	386*276*H57mm	486*276*H57mm	486*276*H57mm	590*276*H57mm
Wattages	100W	150W	200W	240W	300W



■ Classic High Bay

- Beam angle:45°/60°/90°/120°.IP54.
- Philips chips 130-140lm/W; SUMCOM/PHILIPS Driver options.110-265VAC 50/60Hz

Ref Number	GR-HB-100WM	GR-HB-150WM	GR-HB-200WM	GR-HB-240WM
Size(mm)	Ø350*H272	Ø350*H302	Ø350*H352	Ø350*H402
Wattages	100W	150W	200W	240W

■ Recessed High Bay (50W/Modular)

- Beam angle:60°/90°/70°*130° options. 100-265VAC 50/60Hz. IP65, PF>0.95
- Recessed installation for gas station, warehouses etc.Philips chips, 120-130lm/W.



Ref Number	GR-HB-50WY	GR-HB-100WY	GR-HB-150WY	GR-HB-200WY	GR-HB-240WY
Size(mm)	L300*W115*H35	230*325*82mm	305*325*82mm	380*325*82mm	455*325*82mm
Outcut(mm)	L280*W76	217*298mm	292*298mm	367*298mm	442*298mm
Wattages	50W	100W	150W	200W	240W





LED streetlight with Glass cover (GR-SL-D)

- Aluminum body+PC lens+ Glass cover; IP66; 70°140°
- Source: philips SMD 110-140lm/w output.110-265VAC 50/60Hz



Ref Number	GR-SL-100WD	GR-SL-120WD	GR-SL-150WD	GR-SL-180WD
Wattage	100W	120W	150W	180W
Size(mm)	490×246×80	570×290×80	570×290×80	570×290×80

Top Adjustable Led streetlight(Tool-free)

- Adjustable 90° joint: Tool free design with clip; Glass cover+ PC lens.Philips chips 150lm/W output
- Beam angle: 60°/90°/120°/T2M/T3M/T4M options. Cut off switch, SPD options.110-265VAC 50/60Hz



Ref Number	GR-SL-50WH	GR-SL-100WH	GR-SL-150WH	GR-SL-200WH
Wattage	50W	80-100W	150W	200W-250W

Modular LED Streetlight (50W/modular)

- Beam angle: 70°140°;IP66. Install dia:60-65mm.110-265VAC 50/60Hz
- 50W/modular,Philips SMD chips. 110-130lm/W output. PF>0.95, 4-10KV Surge protection.



Ref Number	GR-SL-100WB	GR-SL-150WB	GR-SL-200WB	GR-SL-250WB	GR-SL-300WB	GR-SL-400WB
Wattage	100W	150W	200W	250W	300W	400W
Install dia	6-8m	7-9m	8-10m	10-12m	12-14m	14-18m

Hot sale LED Streetlight (GR-SL-F)

- Beam angle: 70°140°;IP66. Install dia:60-65mm.110-265VAC 50/60Hz
- Philips SMD chips. 110-130lm/W output. PF>0.95, 4-10KV Surge protection.



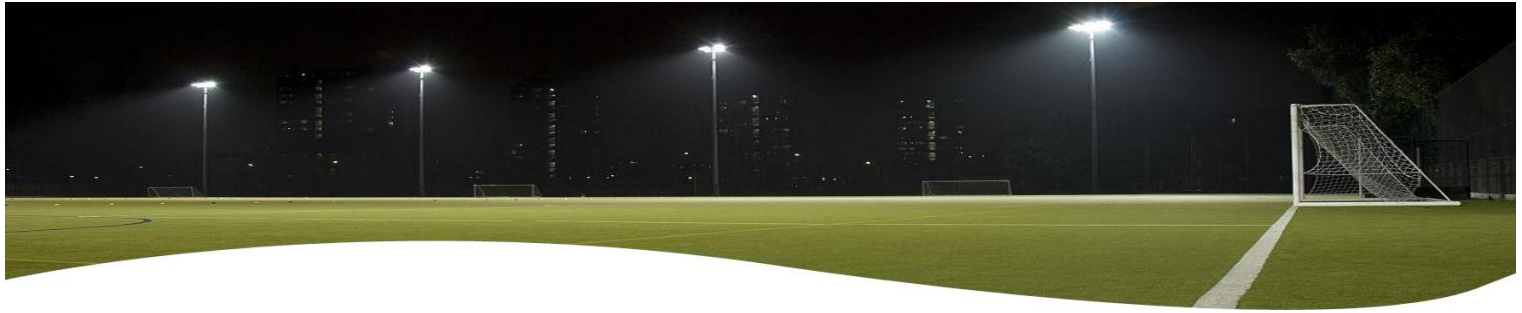
Ref Number	GR-SL-50WF	GR-SL-100WF	GR-SL-150WF	GR-SL-200WF	GR-SL-250WF
Wattage	50W-60W	100W	150W	200W	250W
Dimension(mm)	400*182*71	490*216*71	590*249*71	660*262*71	660*262*71

Cobra LED Street light (GR-SL-P)

- Beam angle: 70°140°/ Diecast aluminum body / IP65 / PF>0.9 / install dia:60-65mm/ 100-240VAC 50/60Hz.



Ref Number	GR-SL-50WP	GR-SL-100WP	GR-SL-150WP	GR-SL-200WP	GR-SL-250WP
Wattage	50W	100W	150W	200W	250W
Size(mm)	500*210*75	720*270*80	860*300*80	950*310*80	1100*335*85



Feature

- SUNCOM/Philips/Meanwell/DONE/SOSEN/MOSO driver brand 3/5Years warranty
- Surge protection 4-20KV, Lifetime >50000Hrs. IK08.

50W/Modular Flood Light(50W-500W) (GR-FL-M)

- Beam angle: 60°/90°/70°*140°; IP66, PF>0.95.110-265VAC 50/60Hz
- 50W/Modular, 10 modular for 500Watt, Philips chips. 110-130lm/W output.



Ref Number	GR-FL-50WM	GR-FL-100WM	GR-FL-150WM	GR-FL-200WM	GR-FL-250WM	GR-FL-300WM	GR-FL-400WM
Wattage	50W	100W	150W	200W	250W	300W	400W-500W
Size(mm)	W75*L315	W156*L315	W237*L315	W324*L315	W399*L315	W474*L315	324*610

100W/Modular Floodlight (GR-FL-E)

- Beam angle:90° as standard, 75°145°options; 110-265VAC 50/60Hz
- 100W/Modular, Philips chips, 120-130lm/W output.IP66, PF>0.95. available to be with emergency kits



Ref Number	GR-FL-100WE	GR-FL-200WE	GR-FL-300WE	GR-FL-400WE
Wattage	100W	200W	300W	400W
Size(mm)	229*370	310*370	391*370	472*370



250W/Modular Stadium Floodlight

- Beam angle: 25/45/60/90°; IP66, PF>0.95.110-265VAC 50/60Hz
- 250W/modular, Philips chips 130-170lm/w; Anti-glare PC lens,low glare value. Shade cover options



Ref Number	GR-FL-250WG	GR-FL-500WG-1	GR-FL-750WG	GR-FL-1000WG-1	GR-FL-1500WG-1	GR-FL-2000WG
Wattage	250W	500W	750W	1000W	1500W	2000W
Size(mm)	177*415*127	360*415*127	540*415*127	360*780*127	540*780*127	720*780*127

LED Tower crane Floodlights (GR-FL-G)

- Beam angle: 60°/ IP66/ PF>0.95 / 120lm per watt output / 100-265VAC 50/60Hz.
- Options: Dimmable



Ref Number	GR-FL-300WG	GR-FL-400WG	GR-FL-500WG	GR-FL-1000WG	GR-FL-1500WG
Wattage	300W	400W	500W	1000W	1000W
Size(mm)	367*382*454	416*310*496	416*381*498	650*650*230	650*650*230



Top Flood Light(50W-500W) (GR-FL-A)

- Beam angle: 30°/60°/90°/T2/T3/T4/T5; IP66, PF>0.95. Moso driver.
- Glass cover+PC Lens, Lumileds chips, 150lm/W output. 110-265VAC 50/60Hz



Ref Number	GR-FL-50WA	GR-FL-100WA	GR-FL-150WA	GR-FL-200WA	GR-FL-300WM	GR-FL-400WM	GR-FL-500WM
Wattage	50W	100W	150W	200W-240W	300W	400W	500W
Size(mm)	290*230*48	310*300*53	360*300*53	370*350*53	430*400*58	548*445*70	560*555*76



Classic Flood Light (GR-FL-A-1)

- Beam angle: 120°; IP65, PF>0.95. Bridgelux SMD2835,100-120lm/W
- 100-240VAC 50/60Hz as standard, it is ok to do DC12V/24V/36V/48V/60VDC input type.

Ref Number	GR-FL-20WA-1	GR-FL-30WA-1	GR-FL-50WA-1	GR-FL-100WA-1	GR-FL-150WA-1	GR-FL-200WA-1
Wattage	20W	30W	50W	100W	150W	200W
Size(mm)	290*230*48	310*300*53	360*300*53	370*350*53	430*400*58	548*445*70



Top LED Flood Light (GR-FL-F)

- 100W/ modular; Beam angle: 90°; IP66, Philips SMD3030 / 100-277VAC 50/60Hz. / PF>0.95 / 130LM/W
- Options: Dimmable

Ref Number	GR-FL-100WF	GR-FL-200WF	GR-FL-300WF	GR-FL-400WF
Wattage	100W	200W	300W	400W
Size(mm)	222*364*H90	L274*W364*H90	L380*W364*H90	L485*W364*H90



Solar Flood Light (GR-FL-60WSF)

- Beam angle: 120°; IP65, Bridgelux SMD2835,high brightness.2days duration.
- Aluminum body+Glass cover+ 6V Poly solar panel+3.2V LiFePo4 battery, including remote controller

Ref Number	GR-FL-40WSF	GR-FL-60WSF	GR-FL-100WSF	GR-FL-200WSF	GR-FL-300WSF
LiFePo4	5000MAH	10000MAH	15000MAH	20000MAH	30000MAH
Solar Panel	6V 10W	6V 15W	6V 20W	25W	30W



■ Single Round Wall light

- Bridgelux COB, CRI90;90-100lm/W.
- Aluminum body+toughed glass, Grey finished, IP65; 30°



Ref Number	GR-BD-7WP	GR-BD-9WP	GR-BD-15WP	GR-BD-20WP
Wattage	7W	9W-10W	15W	18W-20W
Size(mm)	Φ90*160MM	Φ108*200MM	Φ108*200MM	Φ145*200MM

■ Outdoor Up down Wall light

- Beam angle: 30°; IP65.
- Aluminum body+toughed glass cover, Grey/Black finished optional.110-265VAC 50/60Hz



Ref Number	GR-BD-2x7WA	GR-BD-2x10WA	GR-BD-2x15WA	GR-BD-2x20WA
Wattage	2x7W	2x10W	2x15W	2x20W
Size(mm)	Φ90*H260	Φ108*H300	Φ108*H300	Φ145*H300

■ Rectangle Wall Light

- Source: Bridgelux smd CRI80, 90-100lm/W.
- Aluminum body+toughed glass cover,IP65 waterproof; 30°.110-265VAC 50/60Hz



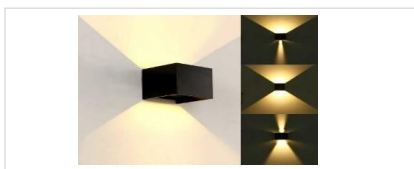
Ref Number	GR-BD-20T	GR-BD-30T	GR-BD-50T
Wattage	12W	18W	24W
Size(mm)	L200*W50*H80	L300*W50*H80	L500*W50*H80

■ High Power Wall Pack Light

- Source:Epistar SMD Chips,110-140lm/W;CRI80
- Aluminum body, Coffe finished , IP65.110-265VAC 50/60Hz



Ref Number	GR-BD-50WP	GR-BD-70WP	GR-BD-100WP	GR-BD-120WP
Wattage	50W-60W	70W	100W	120W
Size(mm)	336*216*182	336*216*182	385*247*195	385*247*195



IP65 Adjustable Up down wall light
GR-BD-2x3WE (10*10*10CM)



Waterproof up down wall light
GR-BD-2x5WD Round/Square (GU10 option)



Single head wall light
GR-BD-5WF Round/Square(GU10 option)

■ Round Aluminum LED Bulkhead

- Source: Bridgelux SMD Chips, 100lm/W; CRI80
- Aluminum body, white/Black finished optional, IP65. 110-265VAC 50/60Hz



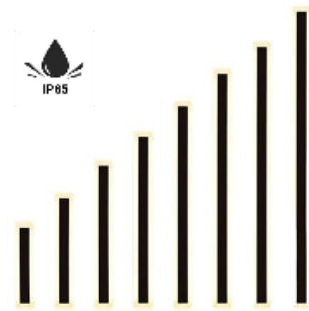
Ref Number	GR-BD-12WR	GR-BD-15WR	GR-BD-18WR	GR-BD-24WR
Wattage	12W	15W	18W	24W
Size(mm)	Ø225*H90	Ø275*H100	Ø275*H100	Ø275*H100

■ Oval Alumium LED Bulkhead

- Source: Bridgelux SMD Chips, 100lm/W; CRI80
- Aluminum body, white/Black finished optional, IP65. 110-265VAC 50/60Hz



Ref Number	GR-BD-12WO	GR-BD-15WO	GR-BD-18WO
Wattage	12W	15W	18W
Size(mm)	L225*W80*H90	L275*W80*H90	L275*W80*H90

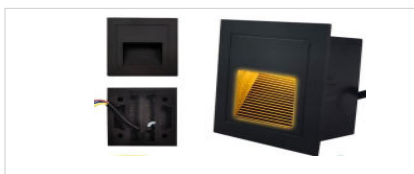


■ Outood Long Linear Wall Mounted Light

- Source: Bridgelux SMD Chips, 100lm/W; CRI80
- Aluminum body, white/Black finished optional, IP65. 110-265VAC 50/60Hz



Ref Number	GR-BD-30G	GR-BD-40G	GR-BD-60G	GR-BD-80G	GR-BD-100G	GR-BD-120G	GR-BD-150G
Wattage	6W	9W	12W	15W	20W	25W	28W
Size(mm)	L300*W80*H50	L400*W80*H50	L600*W80*H50	L800*W80*H50	1000*W80*H50	1200*W80*H50	1500*W80*H50



IP65 Square recessed wall light
GR-BD-L-03 / 3W 100-240VAC 50/60Hz
L86*W86mm, Cutout:76*76mm



Rectangle wall light IP65
GR-BD-L-02 / 5W 100-240VAC 50/60Hz
L210*W60*H55mm, Cutout:195*55mm



Narrow recessed wall light
GR-BD-L-01/ 3W 110-240VAC
L185*W40*H45mm, cutout: 170*w35mm



IP65 Rectangle recessed wall light
GR-BD-L-04/ 7W/9W/12W/15W options
L160*W100*H60mm, cutout:155*w95mm



IP65 Square recessed wall light
GR-BD-L-05 / 9W-12W 15W 18W options
L160*W160*H65mm, cutout:155*155mm



Round recessed wall light ip65
GR-BD-L-06/ 3W
D82*82*45MM, Cutout:78mm



■ Spike/Ground Spotlight

- Beam angle: 30°; IP66.100-240VAC 50/60Hz.
- Aluminum body+toughed glass cover, adjustable bracket.



Ref Number	GR-SP-3WB	GR-SP-5WB	GR-SP-7WB	GR-SP-10WB	GR-SP-15WB
Wattage	3W	5W	7W	10W	15W
Size(mm)	φ42*L80mm	φ50*L90mm	φ58*L120mm	φ61*L140mm	φ75*L160mm



■ Top outdoor Spotlight

- Beam angle: 30°; IP66. ajustable body.100-240VAC 50/60Hz.
- Source: Bridgelux chips,CRI80; 100lm/W. Ground/Spike installation optional



Ref Number	GR-SP-10WH	GR-SP-20WH	GR-SP-30WH
Wattage	10W	20W	30W
Size(mm)	φ80*L130	φ80*L130	φ108*L170



■ Economy Tree Spotlight

- Beam angle: 30°; IP66, Spike/ground installation optional
- Source: Bridgelux chips,CRI80; 100lm/W.100-165VAC 50/60Hz.



Ref Number	GR-SP-5WA	GR-SP-6WA	GR-SP-9WA	GR-SP-12WA	GR-SP-18WA	GR-SP-24WA	GR-SP-36WA
Wattage	5W	6W	9W	12W	18W	24W	36W
Size(mm)	φ95	φ125	φ155	φ155	φ185	φ205	φ235



Narrow beam Outdoor spotlights
GR-SP-10WM (5-10°, IP66,220VAC)



GU10 LED Spike light
GR-SP-GU10 IP65 220VAC



Square spotlights, ip66
GR-SP-K / 9W 18W -72W Options



■ DC24V Inground Light

- input voltage: DC24V or 12V; IP66. Lifetime:50000Hrs
- Source: Epistar LED, 3000K-6500K/ Green/ Blue/ Red optional



Ref Number	GR-GL-1WB42	GR-GL-1WB52	GR-GL-1W-62B	GR-GL-3WB
Wattage	1W	1W	1W	3W
Output(mm)	φ38*H85	φ48*H95	φ58*H105	φ70*H105

■ Side-lighting Inground light

- input voltage:AC/ DC24V or 12V.IP66
- Source: Epistar LED, 3000K-6500K/ Green/ Blue/ Red optional



Ref Number	GR-GL-1WA42	GR-GL-1WA52	GR-GL-1WA62	GR-GL-3WA75
Wattage	1W	1W	2W	3W
Output(mm)	φ38*H85	φ48*H90	φ58*H100	φ68*H105

■ LED Inground Uplight (GR-GL-A)

- input voltage:110-240VAC 50/60Hz.IP66. 30°
- Source: Epistar LED, 3000K-6500K/ Green/ Blue/ Red optional



Ref Number	GR-GL-1WA	GR-GL-3WA	GR-GL-6WA	GR-GL-9WA	GR-GL-18WA	GR-GL-24WA	GR-GL-36WA
Wattage	1W	3W	6W	9W/12W	18W	24W	36W
Output(mm)	φ38*H65	φ95*H90	φ115*H95	φ140*H105	φ195*H105	φ195*H105	φ200*H105

■ Square LED Inground Light (GR-GL-F)

- input voltage:110-240VAC 50/60Hz.IP66. 30°
- Source: Epistar LED, 3000K-6500K/ Green/ Blue/ Red optional



Ref Number	GR-GL-4WF	GR-GL-5WF	GR-GL-6WF	GR-GL-9WF	GR-GL-12WF	GR-GL-16WF	GR-GL-24WF
Wattage	4W	5W	6W	9W	12W	16W	24W
Output(mm)	90*90	115*115	130*130	140*140	150*150	190*190	240*240

■ Linear LED Inground light (GR-GL- L)

- input voltage:110-240VAC 50/60Hz. IP66,30°
- Source: Epistar LED, 3000K-6500K/ Green/ Blue/ Red optional



Ref Number	GR-GL-5WL	GR-GL-6WL	GR-GL-9WL	GR-GL-12WL	GR-GL-18WL	GR-GL-24WL	GR-GL-36WL
Wattage	3/5W	6W	9W	12W	18W	24W	36W
Output(mm)	L190*W80	L290*W85	L290*W85	L590*W85	L590*W85	L990*W85	L990*W85



Swimming Pool Light

- Input voltage: AC/DC24V or 12V; IP68
- Source: Epistar LED, 3000K-6500K/ Green/ Blue/ Red optional

Ref Number	GR-UL-9WE	GR-UL-12WE	GR-UL-18WE
Wattage	9W	12W	18W
Diameter(mm)	φ230	φ230	φ295



Ground Underwater LED Light

- Input voltage: AC/DC24V or 12V; IP68
- Source: Epistar LED, 3000K-6500K/ Green/ Blue/ Red optional

Ref Number	GR-UL-6WA	GR-UL-9WA	GR-UL-12WA	GR-GL-18WA	GR-GL-24WA
Wattage	6W	9W	12W	18W	24W
Diameter(mm)	φ120*H140	φ145*H180	φ145*H180	φ175*H210	φ210*H230



Embeded Underwater Light

- Input voltage: AC/DC24V or 12V; IP68
- Source: Epistar LED, 3000K-6500K/ Green/ Blue/ Red optional

Ref Number	GR-UL-6WB	GR-UL-9WB	GR-UL-12WB	GR-GL-18WB	GR-GL-24WB
Wattage	6W	9W	12W	18W	24W
Outcut(mm)	φ115*H95	φ145*H115	φ155*H100	φ195*H115	φ195*H115



DC24V/12V Linear Wall Washer Light

- Source: Epistar LED, 3000K-6500K/ Green/ Blue/ Red optional
- Aluminum body+toughed glass, IP67. Isolated driver, 2/3years warranty

Ref Number	GR-WW-9WB	GR-WW-18WB	GR-WW-24WB	GR-WW-36WB
Wattage	9W	18W	24W	36W
Length(mm)	500mm	1000mm	1000mm	1000mm



110/220VAC Linear Wall washer light

- Source: Epistar LED, 3000K-6500K/ Green/ Blue/ Red optional
- Aluminum body+toughed glass, IP67. Isolated driver, 2/3years warranty

Ref Number	GR-WW-9WA	GR-WW-18WA	GR-WW-24WA	GR-WW-36WA
Wattage	9WW	18W	24W	36W
Length(mm)	500mm	1000mm	1000mm	1000mm



GR-SL-P

LED Garden Pole light

- Including Type Y, Type 7, D60mm and D75mm installation diameter options. 90° beam angle
- Aluminum body+PC / Glass cover, IP65. 110-265VAC 50/60Hz. 110-140lm/W.

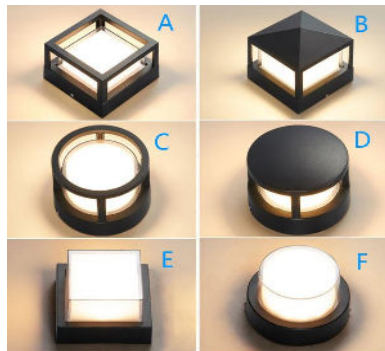
Ref Number	GR-SL-P	GR-SL-Y	GR-SL-T
Wattage	30W-150W	30W-150W	30W-150W
Size(mm)	Ø380*H563mm	Ø423*H520mm	Ø423*H520mm



GR-SL-Y



GR-SL-T



Pillar Bollard Light (Ground/ Wall Mounted)

- Die-cast aluminum body+ PMMA Cover / IP65 Waterproof / 100-240VAC 50/60Hz.
- SMD LED Chips/ CRI80 / PF0.5 / Free flicker

Ref Number	GR-BL-P-A	GR-BL-P-B	GR-BL-P-C	GR-BL-P-D	GR-BL-P-E	GR-BL-P-F
Wattage	12W ± 5%	12W ± 5%	12W ± 5%	12W ± 5%	12W ± 5%	12W ± 5%
Size (mm)	L160*W160*H135	L160*W160*H135	L160*W160*H135	L160*W160*H135	L160*W160*H135	L160*W160*H135



GR-BL-A Series

100-240VAC 50/60Hz. IP65 3Years warranty

Model	Wattage	Size(mm)
GR-BL-600A	7W-10W	Ø108*H600
GR-BL-800A	7W-10W	Ø108*H800
GR-BL-1000A	7W-10W	Ø108*H1000



GR-BL-E Series

100-240VAC 50/60Hz. IP65 3Years warranty

Model	Wattage	Size(mm)
GR-BL-300E	7W-10W	L160*H300
GR-BL-600E	7W-10W	L160*H600
GR-BL-800E	7W-10W	L160*H800



GR-BL-B Series

100-240VAC 50/60Hz. IP65 3Years warranty

Model	Wattage	Size(mm)
GR-BL-300B	7W-10W	Ø108*H300
GR-BL-600B	9W-12W	Ø108*H600
GR-BL-800B	9W-12W	Ø108*H800



GR-BL-D Series

100-240VAC 50/60Hz. IP65 3Years warranty

Model	Wattage	Size(mm)
GR-BL-600D	9W-12W	Ø108*H600
GR-BL-800D	9W-12W	Ø108*H800
GR-BL-1000D	9W-12W	Ø108*H1000



GR-BL-F Series

100-240VAC 50/60Hz. IP65 3/5Years warranty

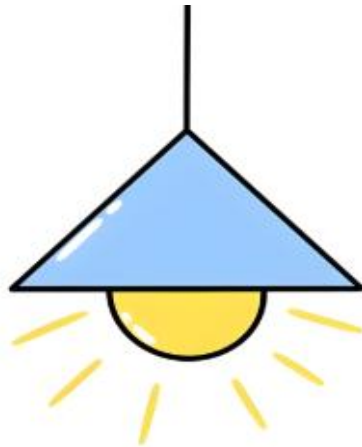
Model	Wattage	Size(mm)
GR-BL-300F	7W	Ø150*H300
GR-BL-600F	9W	Ø150*H600
GR-BL-800F	9W	Ø150*H800



GR-BL-Q Series






Square type/ aluminum +PC cover. 3/5years

Model	Wattage	Size(mm)
GR-BL-300Q	12W	Ø120*H300
GR-BL-600Q	12W	Ø120*H600
GR-BL-800Q	12W	Ø120*H800



Light up your places



 Add: 6 Floor, No 37th, Block 9, Fu'Ding Street, Tiebian Village, Henglan Town, Zhongshan, China
 +86 13570825764
 info@grnled.com / grnled01@gmail.com
 +86 13570825764 (whatsapp/ wechat ID)
 <https://grnled.com>